

Spirit of
GIVING

**LET THERE
BE LIGHT!**

Inspiration from Matthew 5:16

Also in this issue:

Let Your Light Shine

Star-Spangled Generosity

Sun, Sun, Sun, Here It Comes



Feature stories

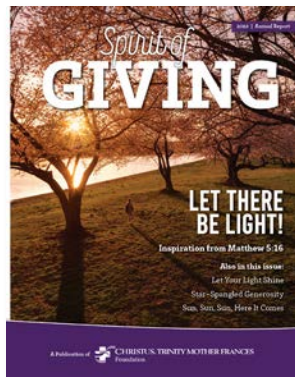
7 Miracle Child

12 A TOAST to EAST TEXAS

24 Chairman's Challenge

Contributions

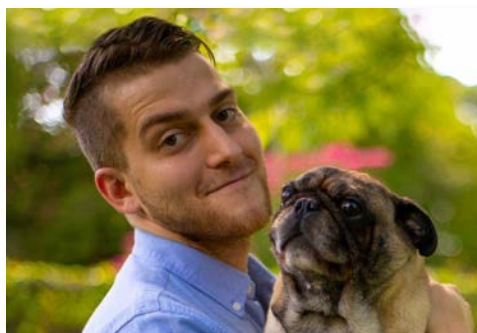
- 8 Donor Spotlight
- 10 Associate Giving
- 16 Tribute
- 18 Project Update
- 22 Community Partner - Brookshire's
- 26 Friends of the Foundation Gift Report



4 Let Your Light Shine!



23 Every Good & Perfect Gift



Most of the photography you'll see on these pages is by **Trev W. Adams**, a photographer/artist from Texas, now living in Philadelphia.

Find Trevor online trevtakesphotos.com

Spirit of GIVING

Welcome to Spirit of Giving, a publication for friends of CHRISTUS Trinity Mother Frances Foundation, a not-for-profit Texas organization. This magazine spotlights the generosity and involvement of the CHRISTUS Trinity Mother Frances' family of benefactors and the impact of their philanthropy on the institution. In showcasing these individuals and the phenomenal programs at CHRISTUS Trinity Mother Frances Health System, we illustrate the power of philanthropy and its crucial role in building a healthier society.

Correspondence and inquiries should be addressed to:
 Editor, Spirit of Giving
 CHRISTUS Trinity Mother Frances Foundation
 100 E. Ferguson, Suite 800
 Tyler, Texas 75702
 Phone: (903) 606-4752
 FAX: (903) 525-1234
 Email: robin.rowan@christushealth.org

Publisher
 Robin Rowan

Managing Editor | Writer
 Suzie Rippy

Contributors
 Sherri Durham
 Christina Mosier
 Kirsten Noyola

Designer
 Trev W. Adams

Photographers
 Trev W. Adams
 Noah Morris
 Inkredible Sounds - Tim

If you do not wish to be contacted as part of our fundraising efforts, please notify the CHRISTUS Trinity Mother Frances Foundation in writing at 100 E. Ferguson, Suite 800, Tyler, Texas 75702.

CHRISTUS Trinity Mother Frances Foundation Team

Robin Rowan, CFRE

Executive Director, CHRISTUS Trinity Mother Frances Foundation

Cindy Bell

Senior Development Officer

Christina Mosier

Manager, Children's Miracle Network Hospitals & Annual Giving

Suzie Rippy

Manager, Communications, Grants & Events



Pass it ON

*It only takes a spark to get a fire going, And soon all those around can warm up in its glowing. That's how it is with **God's love**, once you've experienced it. You spread **His love** to everyone. You want to **Pass It On**.*

In 1969, songwriter Kurt Kaiser wrote the closing song for "Tell It Like It Is," a Christian youth musical on which he was collaborating. His song, "Pass It On" has a simple but powerful message: once you experience God's love, you will want to share it with those around you, passing on the blessing of light and hope that you have been given.

Sharing your spark – shining your light on others – being the light – that is what this issue of Spirit of Giving is all about. This past year, we have been brought out of the darkness of the COVID 19 days, and we reached forward into the marvelous light of new beginnings.

As you reflect on the pages of our 2022 Spirit of Giving:

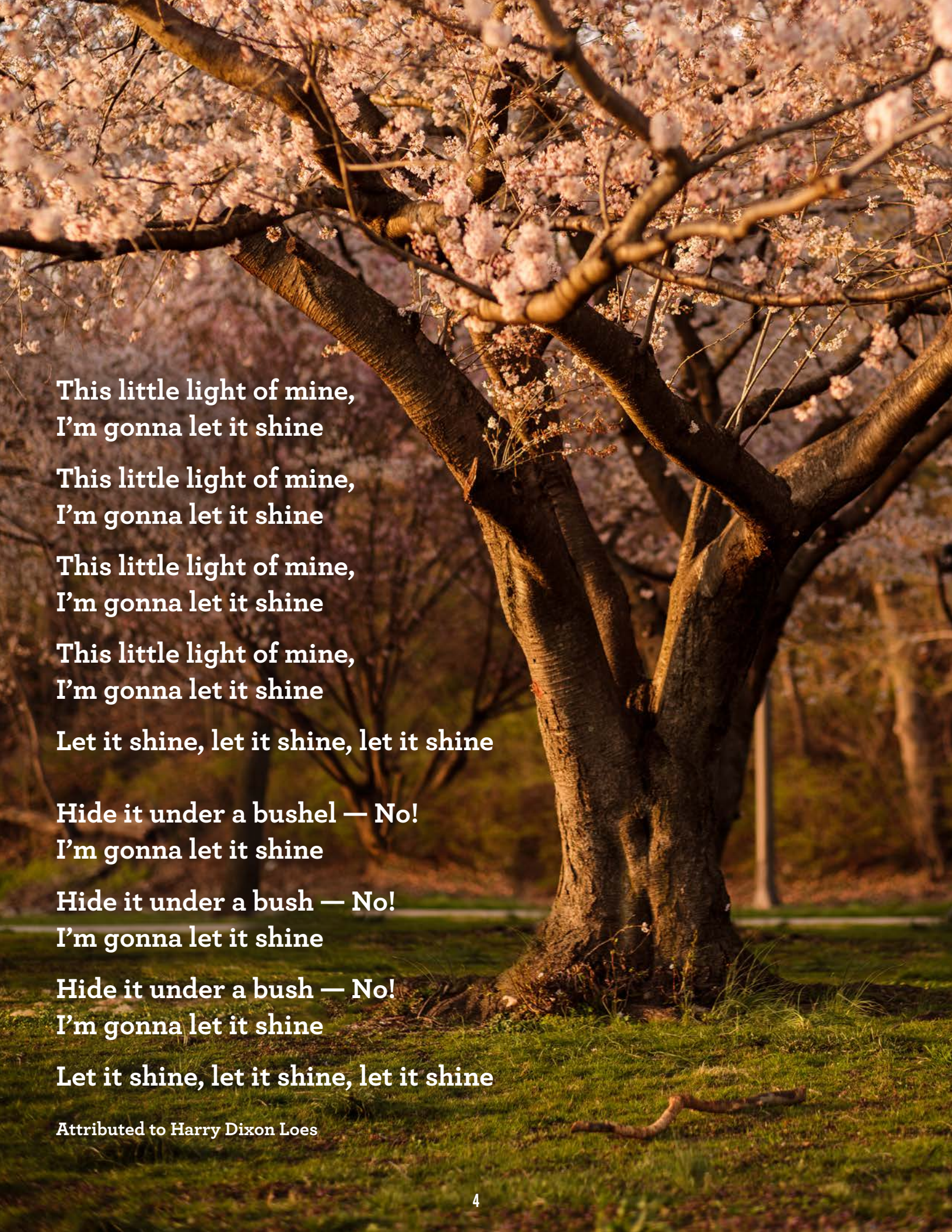
- Examine the radiant stories of those who are **sharing their sunshine** with our community.
- Let the heartwarming articles celebrating Foundation donors and volunteers **ignite a spark** within you.
- Be dazzled by shining medical advancements that only happened because you chose to **light the way** and support the Foundation initiatives.

Dear Friends of the Foundation, we encourage you to continue to be a spark that inspires others, to reveal the good news about the work being accomplished at CHRISTUS Trinity Mother Frances through your generous gifts. We are so very grateful that you share our mission to spread God's love to everyone in this region.

Be the light. Illuminate others. **Pass it on!**

Suzie Rippey

Managing Editor



**This little light of mine,
I'm gonna let it shine**

**This little light of mine,
I'm gonna let it shine**

**This little light of mine,
I'm gonna let it shine**

**This little light of mine,
I'm gonna let it shine**

Let it shine, let it shine, let it shine

**Hide it under a bushel — No!
I'm gonna let it shine**

**Hide it under a bush — No!
I'm gonna let it shine**

**Hide it under a bush — No!
I'm gonna let it shine**

Let it shine, let it shine, let it shine

Attributed to Harry Dixon Loes

LET IT SHINE!

“In the same way, let your light shine before others, that they may see your good deeds and glorify your Father in heaven.” Matthew 5:16

As a child I learned so many wonderful songs in Sunday School. The songs that I especially loved had hand motions, such as “Deep and Wide”, “Zacchaeus” and my favorite, “This Little Light of Mine.” You held up your index finger on one hand representing the candle; then you cupped your other hand over it for “hide it under a bushel;” then you pulled it away as you shouted “NO!” Through this simple song, children learned one of Christ’s teachings: Let your light shine! We were encouraged to shine our light before the world, to resist our natural inclination to sit back and do nothing, and to actively share our gifts to make the world a better place. And...we got to “holler” inside the church!

In Matthew 5:16, Christ commands us, “Let your light shine before others, that they may see your good deeds and glorify your Father in heaven.” As we reflected on the 2022 Foundation journey, this verse inspired us to think back over the many times when you, our **Friends of the Foundation**, shared your gifts and shined so brightly in the past year. Once again you embraced and blessed the Foundation programs and shared your spirit of giving, furthering our mission to improve health care for your fellow Northeast Texans. We are so very grateful that you chose to light the way for others through your generosity.

Throughout these pages we celebrate our generous donors, devoted volunteers, compassionate community partners and faithful Associates and the light their gifts of time, talent and treasure bring to the Foundation.

- **Moments of Light-soaked Joy - the story of our thriving 2022 Miracle Child Corbin Robinson**
- **Light that Leaves a Legacy– remembering our dear friends whose light will shine well beyond the time they spent on earth**
- **The Light of Hope - the opening of the NETX Cancer & Research Institute, a state-of-the-art treatment and research facility, whose brilliant mission is to END CANCER**

Just as thousands of candles can be lit by a single candle, the spark from your generosity can ignite a flame of inspiration in this community. Don’t hide your light under a bushel, use your platform to spread faith, hope and light to everyone you encounter. Continue to let your light shine before others, illuminating the path of giving so that the world might be inspired to follow.

Robin Rowan, CFRE
Executive Director
CHRISTUS Trinity Mother Frances Foundation





Lighting the Path

In August, a committee composed of community supporters gathered for the annual Children's Miracle Network Allocation Meeting. Departments across CHRISTUS Trinity Mother Frances Health System, who treat pediatric patients, were invited to request funding for equipment, programs and services to enhance the quality of health care for the kids in our community. "I was honored to participate in the CMN Allocation Meeting to understand our need as a community through the eyes of those providing the care," said Elliott Moore, President & General Manager, CBS19. "It motivated me and our organization to continue striving to meet the need," he said. The committee allocated \$1.2 million to "light the path," funding pediatric projects such as:

- The CHRISTUS CARES Program which includes the Special Needs Clinic and Respite Care Program, all free of charge to families of children with special needs - \$235,000
- Medical grade food models to teach kids with diabetes safe nutrition - \$3,000
- Premature baby mannequin to train caregivers on the most lifelike scenario possible - \$5,000
- Ultrasound system to enhance pediatric vascular access - \$27,000
- Two Giraffe Omnibeds to replicate the womb for babies born too soon - \$55,000
- A NICU family support program that helps give NICU parents hope in a difficult time - \$80,000



2022 CHILDREN'S MIRACLE NETWORK HOSPITAL ALLOCATION COMMITTEE

Siobhan Barney - Volunteer/Miracle Family Representative
 Mark Barret, MD - CTMF Chief of Pediatrics
 Joanna Cornelio - Kelly Community Federal Credit Union
 John Gaston - United Way of Smith County
 Terry Giles - Dairy Queen of Tyler, Inc.

Rindi Irvin - Walmart
 Sister Malgorzata Majszyk - CTMF Pastoral Care
 Elliott Moore - CBS19 TV
 Larry Thompson - MIX 93.1
 Corinna Ruiz - La Invasora 96.7

“Light is to darkness what
love is to fear; in the presence
of one the other disappears.”

Dr. Seuss



Children's
Miracle Network
Hospitals

2022 Miracle Child Corbin Robinson

Psalm 18: 28 “My God turns my darkness into light.”

The Robinson family was honored to represent Children's Miracle Network Hospitals this past year, to tell their story and show the world what a miracle their son Corbin truly is. Corbin Lance Robinson was born in The Birth Center at CHRISTUS Mother Frances Hospital - Tyler at nearly thirty-seven weeks, weighing 7 lbs. 3 oz. His parents immediately embraced their precious new baby for exactly what he was - a miracle! Corbin, their amazing and beautiful child, was born with Down Syndrome.

Within the first few hours of birth, doctors discovered a hole in the newborn's heart, and found that Corbin had congenital hypothyroidism, a rare condition that prevents his body from making normal amounts of thyroid hormone. He was admitted to the Neonatal Intensive Care Unit, where he remained for thirty-five days. Miraculously, at his one-year-old visit, doctors determined that the hole in his heart had closed on its own, and Corbin would not need heart surgery. He continues to see a CHRISTUS Trinity Clinic pediatric endocrinologist, and he participates in several programs of the CHRISTUS Cares Clinic, including the Special Needs Clinic and the Respite Program. At school he works with a speech, physical, and occupational therapist and is making tremendous strides every day. Although there have been many challenges, Corbin is a happy, healthy kid!

Corbin is a local celebrity in his hometown of Arp, and he continues to inspire those around him with his joyful smile and outgoing personality. This past fall, Corbin was celebrated in front of a packed stadium at the Arp High School 2022 Homecoming Game.

Parents Dania and Craig say that Corbin's birth was just the beginning of living life and appreciating all that life has to offer. “Corbin has changed all of our lives,” said Craig. “He has been a joy and our reason to believe that anything is possible; our strength to fight and our most amazing excuse to slow down and enjoy the small things in life. Corbin is going to be happy; he's going to be smart; he's going to make us proud,” he said.

Christina Mosier, Manager of CMNH for CHRISTUS Trinity Mother Frances Foundation, said, “When Miracle Families open their lives to the community, it is a blessing and encouragement to others whose children may struggle with similar issues,” said Christina. “We believe that nothing is more important than the health of our children, and we are proud to be the only designated Children's Miracle Network Hospital in Northeast Texas,” she said.

Corbin is just one of the 50,000+ local kids that benefit from the funds raised through CMN Hospitals each year! Every dollar we raise helps local kids just like Corbin receive the medical care they need.



ANGEL SALEH

**“There are two ways of spreading light; to be the candle or the mirror that reflects it.”
-Edith Wharton**



THESE PINS REPRESENT OVER 14,000 HOURS OF UNWAVERING VOLUNTEER SERVICE.



REFLECTING GOD’S LIGHT

Angel Saleh was truly an example of someone who mirrored God’s light with her acts of love and service for others. A faithful CHRISTUS Mother Frances Hospital volunteer for 58 years, “Miss Angel” gave over 14,000 hours of service. Her proudest accomplishment was starting the ICU and Surgery Waiting Room manned by Auxiliary volunteers beginning in the late 1970’s. Years later, her husband “Snooky” made a generous gift to the Foundation in her honor to create the Saleh Surgery Waiting Room.

With a twinkle in her eye, a warm smile and a hug for everyone, she manned her volunteer post in the hospital every Wednesday and was known for comforting thousands along her journey, handing out delicious strawberry candies. Her generosity through the Saleh Family Foundation leaves a legacy

of giving that will live on for generations to come. The Foundation was proud to honor Miss Angel by dedicating a plaque in her memory. An amazing sweetheart of a lady – she will never be forgotten.



Beverly Saleh Mamey with Sister Margo and Sister Michaela



**HALL FAMILY FOUNDATION
VETERANS PLAZA**

IN MEMORY AND HONOR OF ALL UNITED STATES VETERANS
OUR DEBT TO THE HEROIC MEN AND VALIANT WOMEN IN
THE SERVICE OF OUR COUNTRY CAN NEVER BE REPAID.
WE HUMBLY THANK THOSE WHO PUT THEIR LIVES ON
THE LINE TO PROTECT THE FREEDOMS WE ENJOY.
THEIR DEVOTION AND HEROISM WILL REMAIN
IN OUR HEARTS AND IN OUR PRAYERS.

"One Nation Under God, Indivisible, with Liberty and Justice For All."

DEDICATED WITH GRATITUDE
PAM AND GERRY HALL
NOVEMBER 11, 2022



STAR-SPANGLED GENEROSITY

"One nation under God, indivisible, with liberty and justice for all."



Through war and peace, many members of the Pam and Gerry Hall family have answered the call, serving our country with honor. On November 11, we celebrated the dedication of the Hall Family Foundation Veterans Plaza at the main entrance of CHRISTUS Mother Frances Hospital – Tyler. This monument to freedom would not have been possible without the Halls' generous gift to the CHRISTUS Trinity Mother Frances Foundation. "These men and women who have served in the military gave so much in defense of our country," said Pam Hall. "Whatever we can do, we do it with gratitude."

The ceremony coincided with the annual Veterans Day celebration, honoring those who have served our country, both past and present. CHRISTUS Associates from the Army, Navy, Air Force, Marine Corps, and Coast Guard were on hand for the Presentation Of Colors. The ceremony concluded with a "blessing" of the new Plaza and the unveiling of the plaque that forever recognizes the Hall family's contribution. "The Hall's gracious support inspired the creation of this heroes monument and shows their deep commitment to furthering the patriotic principals we all treasure," said Robin Rowan, Executive Director, CHRISTUS Trinity Mother Frances Foundation. "We are eternally grateful."

Sharing the Sunshine

"Keep your face always toward the sunshine,
and shadows will fall behind you."

Walt Whitman



Associates enjoy the Foundation-provided lunch together in the sunshine.



Lucky Associates spend time with "Cooper, The Mini Cow."



Festive headgear is the rule of the day!

Each year, Associates from across the CHRISTUS Trinity Mother Frances Health System pledge to share their light and give back to help make a difference in the lives of their patients and fellow Associates.

"Supporting the mission is a way to give back for all my blessings. CHRISTUS Health does so many good works and I want to help support that." – CHRISTUS TMF Associate

A graphic at the top of the page features a white sun with rays rising above a horizontal line. On either side of the sun, there are silhouettes of hands raised in the air, set against a light purple background.

SUN, SUN, SUN, HERE IT COMES!



The past few years may have seemed like “a long, cold, lonely winter” at times. But Children’s Miracle Network Hospitals is so fortunate to have many loyal community partners who believe in our mission and “bring the sunshine,” raising essential funds and building awareness for children’s health in our community.

La Invasora celebrated its 10th annual Radiothon benefiting CMN Hospitals with a Party on the Square in downtown Tyler. La Invasora has helped raise over \$800,000 through the local Hispanic community over the last decade, all to help kids!

Students at Stephen F. Austin State University in Nacogdoches Texas fundraise year-round to prepare for their 2022 annual Dance Marathon event. In April, hundreds of SFA students gathered in the ballroom on campus to celebrate the miracles made possible when a group of hard-working students come together with a plan to change kids’ health and change the future. Miracle Families attended the 90’s-inspired event to help celebrate the hard work by all!



RoundAbout Gaming Team, led by Kenda and Michael Leavine, participated in the annual Extra Life Game Day fundraiser, to help raise critical funds for pediatric health care. Each year, they pledge to “Play Games, Heal Kids” for 24 consecutive hours in honor of the kids in the hospital who are too sick to play. In 2022, they raised over \$11,000 for CMN Hospitals! That’s a win-win for everyone!





Igniting Sparks for Breast Cancer Treatment & Survivorship

For 20 years, CHRISTUS Trinity Mother Frances has been blessed by a group of women who radiate enthusiasm for improving the health care of women and children in our community. Each year the CHRISTUS Trinity Mother Frances Foundation Women's Board chooses a project from within our health system, and raises support through "A Toast to East Texas," a series of unique parties and special events at some of the most exceptional homes and venues in East Texas. Generous patrons from the community host the events at no cost to the Foundation, allowing 100 percent of the proceeds from A Toast to East Texas to support the projects of the Women's Board.

A note from the 2022 Chair

I was honored to Chair the 7th annual A Toast to East Texas event. We hosted a Preview Party at Willow Brook Country Club where we revealed individual videos showcasing our 2022 party line up. We are grateful to artist Dace Kidd for adding her original designs to the Toast invitation and for donating the proceeds from an art auction of her work during the party. The seven awesome parties beginning September 22 and ending October 6 were creative, joyful and very well-attended. Whether you supported A Toast to East Texas 2022 as a host, a sponsor or a participant, your generous donation enabled the Women's Board to gift a Faxitron Trident HD Specimen Radiography System to the Surgical Oncology Program at CHRISTUS Trinity Clinic, and raised funds to support the new Breast Cancer Survivorship Program.

Stay tuned for the announcement of our 2023 fundraising initiative. We know our project will speak to the hearts of you all, and hope that you will join us in September and October as we celebrate A Toast to East Texas 2023.

The Lord has truly blessed us with a community full of generous hearts and we are truly grateful!

Cheers!



Tomi Ellis 2022 Chair
A Toast to East Texas



**CHRISTUS Trinity
Mother Frances Foundation
Women's Board**

- Michelle Allgaier**
- Heather Bates**
- Brenda Boylan**
- Wendy Bratteli**
- Betsy Buchanan**
- Carmen Carpenter***
- Darla Childress**
- Vickie Cooper**
- Karolyn Davis**
- Jión Dietz**
- Tomi Ellis – Chair**
- Rose Giles**
- Jenna Gillingham**
- Shannon Glenney***
- Linda Denson Griffin***
- Cayti Hart**
- Susan Hill**
- Sandy Johnson**
- Teresa Langley**
- Dawn Leatherwood**
- Lindsay McKinney**
- Michelle Medel, MD**
- Karen Norton***
- Mercedes Noteware***
- Valerie Obesso**
- Mona Odom**
- Bonnie Palmer***
- Shanda Proctor**
- Linda Rowe***
- Linda Rudd**
- Kari Smith**
- Becky Spencer**
- Annalisa Stenklyft**
- Sister Michaela Tomkowiak**
- Jennifer Walsh**
- Rebecca Wampler**



*Sustaining Member



The stars shone brightly as more than 400 attendees, including past honorees, sponsors and Miracle Families gathered at The Cascades Country Club on March 26 to celebrate a decade's worth of Miracles Begin With You! honorees and the miracles made possible in Northeast Texas.

The event was founded in 2013 by Julie and Tom Brown and Katie and Reagan Butts as a way to honor the Miracle Makers in pediatric health care in the community. This year's tenth and final event raised more than \$225,000 for Children's Miracle Network efforts, which brought the celebration's total to more than \$1.03 million.

Packed with great memories and emceed by CBS19 Anchor Dana Hughey, the evening featured a special message from Children's Miracle Network Texas Champion Will Butts and a special video message from Marie Osmond, co-founder of CMN Hospitals. Guests enjoyed a video montage of past honorees and a stirring vocal performance by Maelyn Jarmon, who shared her personal struggle with childhood hearing loss and how she overcame her disability to win The Voice thanks to treatment at a children's hospital.

A great finale for ten years of Miracle Making!





The meaning of miracles

LUNCHEON

benefiting

 **Children's Miracle Network Hospitals®**
at CHRISTUS® Trinity Mother Frances Health System

Join Children's Miracle Network Hospitals to celebrate 35 years of advancements in pediatric health care, made possible only by generous donations and community support.

Featuring a *Miracle Expert* panel discussion, this event will inspire and captivate anyone who's passionate about the future of kids' health in our community.

MAY 10, 2023 | 11:30AM - 1:00PM

WILLOW BROOK COUNTRY CLUB

SPONSORSHIPS AND TICKETS AVAILABLE ONLINE

PANEL OF MIRACLE EXPERTS



Tiffany Taylor, MD

Neonatologist/ Medical Director, Neonatal ICU
CHRISTUS Mother Frances Hospital - Tyler



Chad Solomon, BSN

Certified Flight Nurse/ Interim Chief Flight Operations Officer
CHRISTUS Flight For Life



Juan Manuel Yañez

On Air Personality/ Assistant Content Director
La Invasora 96.7 Hispanic Radiothon



Siobhan Barney

Disability Advocate/ CMN Hospitals Volunteer
Mom to Blake Barney, 2019 CMN Miracle Child

WWW.THEMEANINGOFMIRACLES.ORG

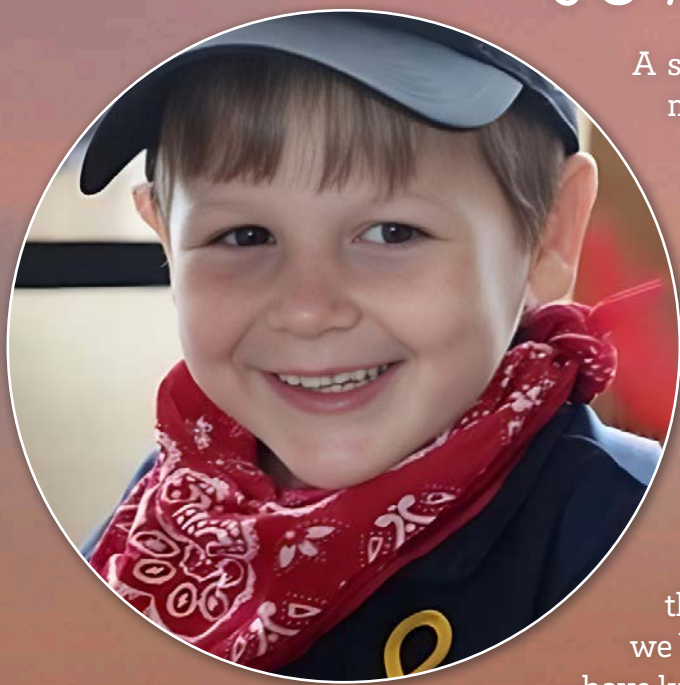
You Light Up my Life



A SALUTE TO OUR FOUNDATION CHAMPIONS

CHRISTUS Trinity Mother Frances Foundation said farewell in 2022 to some very special friends, shining lights whose brightness and warmth will forever light up our lives. Each in their own way have transformed the lives of others, providing hope to the Northeast Texas community.

JOYFUL JACK BRYANS



A shining star went to be with the Lord, and the earth is a much less joyful place in his absence. Jack Bryans served as the 2018 Children's Miracle Network Hospitals Miracle Child, representing the CTMF Foundation as an ambassador for children's health care in East Texas. Jack was diagnosed with Leigh Syndrome, a mitochondrial disease that would slowly cause him to lose his abilities, yet he lived life to the fullest, greeting each new day with excitement. He loved people, and chose joy in every experience, whether lighting the Tyler Christmas Tree or playing baseball in the Challenger League, which is why he was known as Joyful Jack. He gave the best hugs and always told people that he loved them. Jack demonstrated that life should be valued by how we love, not by what we can or cannot do. We were blessed to have known and loved this precious soul.

*You light up my life - You give me hope to carry on
You light up my days - And fill my nights with song*

Lyrics by Joseph Brooks

JUNE S. FLOCK



CHRISTUS Trinity Mother Frances Foundation will be forever grateful to Mrs. June S. Flock for the transformational gift we were awarded in 2022. We are saddened by the loss of such a dear supporter, but we are so very honored by Mrs. Flock's heartfelt gift. With grateful appreciation, we have named the June S. and Jack W. Flock Imaging Center in the Northeast Texas Cancer & Research Institute as a tribute to their commitment to providing world-class cancer care to their neighbors in Northeast Texas. The generosity of June Flock will be fondly remembered for the legacy she has left to her community.

ELIZABETH SUTTON



Elizabeth Sutton and husband Ben were staunch supporters of CHRISTUS Trinity Mother Frances Health System for decades. They had an insatiable passion to serve God and mankind, and they lifted and inspired those around them during their lifetime. The impact from their creation of the Ben and Elizabeth Sutton Endowed Chair of Excellence in General Oncology will allow us to offer the most advanced radiation, chemotherapy, immunotherapy and combination treatments available and will change the future of cancer treatment in Northeast Texas.

A BEACON OF Hope

With grateful appreciation to our generous donors. Your gifts will help realize this shared vision.

POPE

Kellie and Rogers Pope

Endowed Chair of Excellence in Surgical Oncology

SPENCER

Jerry Spencer Memorial

Endowed Chair of Excellence in Oncology Research

SUTTON

Ben and Elizabeth Sutton

Endowed Chair of Excellence in General Oncology

Many of our community partners were represented at the opening of The Northeast Texas Cancer & Research Institute, and we are so very grateful for all of you who made a gift to this project. The support of a generous community is an essential part of the success of such ambitious endeavors. Donor champions such as June and Jack Flock, Kellie and Rogers Pope, Becky and Jerry Spencer and Ben and Elizabeth Sutton enable us to further our mission to convert new discoveries into life-saving benefits for every patient, every day here in Northeast Texas.

We are truly thankful for these friends who share our vision to bring advanced detection, prevention, treatment and clinical research to the Northeast Texas region, creating a world-class cancer care experience close to home. We cherish your spirit of giving. With you, we are one team with one dream – end cancer.

DONORS

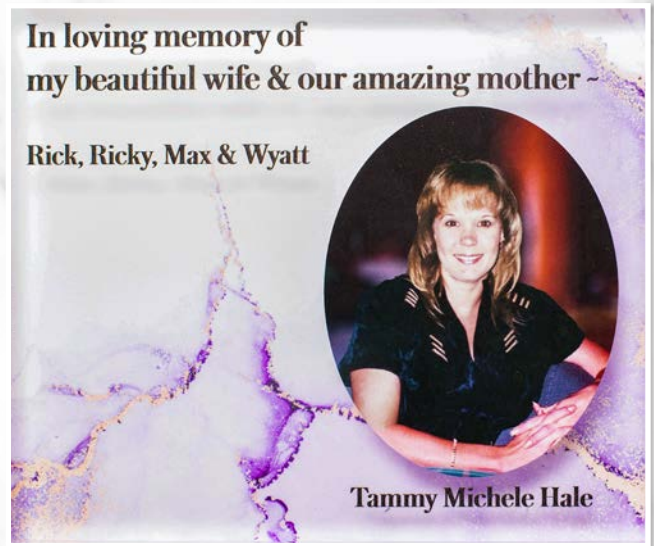
Ava and John Ashby	Kathy and Brian McCabe
Vicki and Lindsey Bradley	Dorota and Gary Miller
Key and Dr. Stuart Crutchfield	Shirley and Ronald Oakes
June S. and Jack W. Flock	Mary and Dr. Hugh Poinderster
Anita and Scott Fossey	Shanda and Jason Proctor
Shannon and Chris Glenney	Ken and Joyce Boddy Family
Pamela and Gerald Hall	Linda Rowe
Don and Linda Huffaker	Holt and Collin Shull
Mary Elizabeth and Alan Jackson	Southside Bank
Melisa and Ken Lackner	Elizabeth Wright
Sherril and Brian Matson	

CHRISTUS
REINY MOTHER FRANCES
Foundation

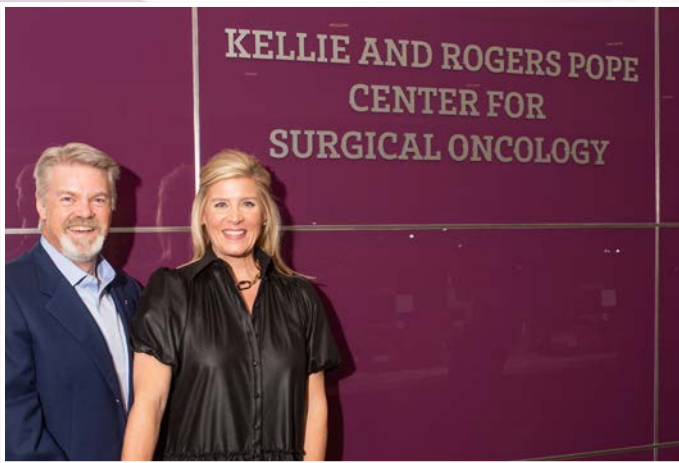
ONE TEAM
WITH
ONE DREAM

END CANCER

Hope Starts Here



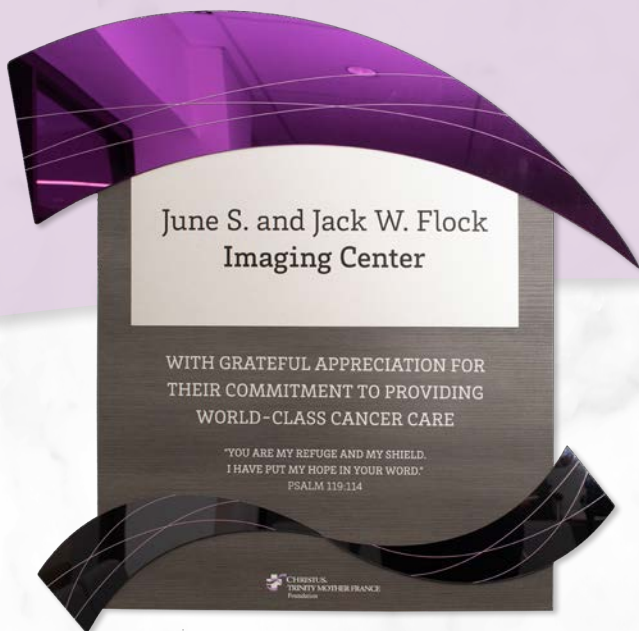
Butterfly Wall in memory of Tammy Hale



Kellie and Rogers Pope Endowed Chair of Excellence in Surgical Oncology



Becky Spencer
Jerry Spencer Memorial Endowed Chair of Excellence in Oncology Research



June S. and Jack W. Flock Imaging Center



NORTHEAST TEXAS CANCER & RESEARCH INSTITUTE



Baby You're a Firework!

CMNH COMMUNITY PARTNERS KNOW THAT YOU MUST FIND WHAT SPARKS A LIGHT IN YOU, SO THAT YOU CAN ILLUMINATE THE WORLD!



NATIONAL CHARITY LEAGUE

National Charity League is a local mother/daughter philanthropy group that volunteers with Children's Miracle Network throughout the year. Several members of the NCL Tyler Chapter stopped by the pediatric units to say thank you and distribute hand-made goodie bags to pediatric nurses.

ALTMAN PLANTS

Altman Plants is honored to celebrate their longstanding partnership with CMN Hospitals. Twice a year, Altman donates thousands of beautiful plants to sell to CHRISTUS Associates and the community, 100% of proceeds benefiting pediatric health care.



MIRACLE MONDAYS

For the third year, DQ of East Texas and Kelly Community Federal Credit Union have teamed up to celebrate Miracle Mondays in May. For every DQ Blizzard sold on Mondays in May, \$.50 cents was donated to CMN Hospitals. Talk about a sweet partnership!



VOLUNTEER SERVICES FESTIVAL OF TREES

The lobby at CHRISTUS Mother Frances Hospital was filled with cheer during the 18th annual Volunteer Services Festival of Trees. More than 80 beautiful trees were donated by Associates and community members and were auctioned off to benefit pediatric health care.



MIX 93.1 RADIOTHON

Lucky Larry and Mande Montana celebrated another successful Mix 93.1 Radiothon by sharing local miracle stories and helping raise nearly \$32,000!



Celebrating A Shining Example of Partnership



at CHRISTUS, Trinity Mother Frances Health System

A SHINING EXAMPLE – A 35-YEAR HISTORIC PARTNERSHIP

In 1987, when then Mother Frances Hospital became the local Children's Miracle Network Hospital, Brookshire Grocery Company was one of the first local companies to step up and support. The partnership was a natural fit, with BGC and CMN both focusing on the health and wellness of families in East Texas.

"Brookshire Grocery Company is proud to join with our employee-partners, customers, vendors and community partners each year to make meaningful contributions in the 165 communities where we operate our more than 200 retail stores. In 2022, more than 700 golfers representing 300 of our vendors participated in our Annual Brookshire's Benefit Golf Tournament in support of CMN and other charitable causes that help families and strengthen communities." - Brad Brookshire, Chairman of the Board and Chief Executive Officer, BGC

In 1988, Brookshire Grocery Company hosted its first golf tournament to benefit children's charities in our area.

"Children's Miracle Network wasn't very well known in the community yet," says Cindy Kidwell, CMN Hospital's first director and inaugural golf tournament coordinator. "To have a high-profile company like Brookshire Grocery Company supporting the cause was a breakthrough event for the future of fundraising for kids' health."

Over the years, Miracle Families attended the annual tournament, so that players could meet them and see what miracles they helped make possible. Brookshire's Benefit Golf Tournament continues to generously support CMN Hospitals each year to help improve the lives of many East Texas Children.

The Children's Miracle Network Hospitals Telethon was an annual tradition from 1987-2017. Each year, representatives from Brookshire Grocery Company proudly presented their donation check live on TV.

Most recently, Children's Miracle Network named a special hospital room in the Children's Center at CHRISTUS Mother Frances Hospital - Tyler in honor of Brookshire Grocery Company, to commemorate the 35-year partnership and their continuing generous support.



To-date, Brookshire Grocery Company has donated well over \$3 million to support pediatric equipment, programs and services in our health system. Thank you, Brookshire's, for believing in the miracle of pediatric health care and continuing to change countless children's lives each year for the better.

The background of the entire page is a photograph of the Philadelphia City Hall tower, taken from a low angle looking up. The sky is a mix of orange, yellow, and grey, suggesting a sunset or sunrise. Several white doves are captured in flight, scattered across the sky. The tower's architecture is detailed, showing a clock face and various statues.

EVERY GOOD & PERFECT GIFT

“Every **GOOD** and **PERFECT GIFT** is from above, coming down from the **FATHER** of the **HEAVENLY LIGHTS**, who does not change like **SHIFTING SHADOWS**.”

JAMES 1:17

PAGE 24

CHAIRMAN'S CHALLENGE

PAGE 25

FINANCIAL STATEMENT

PAGE 26

FRIENDS OF FOUNDATION GIFT REPORT

SHARING YOUR LIGHT



“JUST AS ONE CANDLE LIGHTS ANOTHER AND CAN LIGHT THOUSANDS OF OTHER CANDLES, SO ONE HEART ILLUMINATES ANOTHER AND CAN ILLUMINATE THOUSANDS OF OTHER HEARTS.” LEO TOLSTOY

It's hard to think of anything that's more beautiful than a Christmas Eve candle-light service. There's a radiance, a sparkle, a warmth and a genuine aliveness to it all. It begins with just one candle and quickly spreads throughout as each person turns to their neighbor and shares their flame. So simple and yet captivating, and a great analogy for "giving."

Most of you received this annual report magazine because you were CHRISTUS Trinity Mother Frances contributors in 2022. Giving part of yourself, sharing your light, is one of the most selfless acts you can bestow on others. Your commitment to helping people and transforming our community inspires others and infuses hope into those who need it most. By giving, you are playing an active role in guiding our community forward towards a better tomorrow for everyone, and you lead the way by modeling what it means to be a community member who shares their light in times of darkness.

My challenge to you, our Friends of the Foundation, is to continue sharing your light with others and believing in our mission to extend the healing ministry of Jesus Christ.

Gratefully,

Dennis Box, Chairman, Board of Directors
CHRISTUS Trinity Mother Frances Foundation

BOARD OF DIRECTORS

Dennis Box, Chair

Thomas J. Brown

Katie Butts

James A. Caccitolo, MD

Randall V. Childress

Darrell Dement

Russ Gideon

Terry Giles

Chris Glenney

Marilyn Hardy

Steve Hellmuth

Sister Malgorzata Majszczyk

Steve Keuer, MD*

Jim Mazzu

Brian McCabe

Andy Navarro*

Laura Redman

Linda Rowe

John Soules, Jr.

Bishop Joseph E. Strickland

Frank Ward, MD

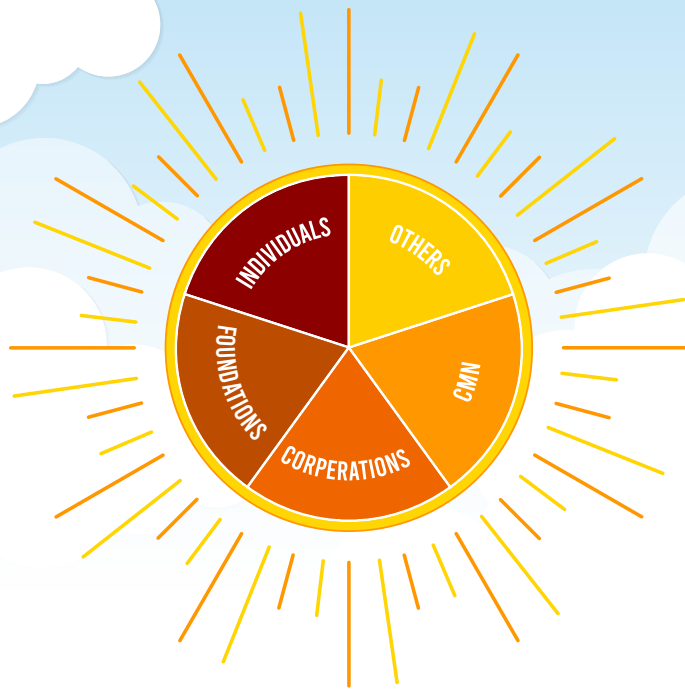
John P. Williams

*Ex Officio

FINANCIAL STATEMENT

JANUARY 1, 2022 THROUGH DECEMBER 31, 2022

SUMMARY OF GIFT SUPPORT FOR CHRISTUS TRINITY MOTHER FRANCES FOUNDATION



INDIVIDUALS	\$4,983,428
FOUNDATIONS	\$266,548
OTHERS	\$58,269
CORPORATIONS	\$68,600
CHILDREN'S MIRACLE NETWORK	\$1,295,245

TOTAL: \$6,672,090

This number reflects total gifts and pledges

A TOAST TO EAST TEXAS 2022

CHRISTUS Trinity Mother Frances is blessed to have a supportive group of volunteers, the Foundation Women's Board, who are passionate about improving health care for women and children. They choose an annual project from within our health system and raise support through their fundraising vehicle, "A Toast to East Texas," a series of unique parties hosted by the community at no cost to the Foundation. 100 percent of the proceeds from A Toast to East Texas goes to support the Women's Board projects.

TOTAL: \$236,762

CHRISTUS TRINITY MOTHER FRANCES ASSOCIATES "SHARE THE SPIRIT" CAMPAIGN

The Share the Spirit Associate campaign is funded by employees from all areas of CHRISTUS Trinity Mother Frances Health System. Donors may designate their funds to projects, equipment and services designed to benefit patients of CHRISTUS Trinity Mother Frances Health System.

TOTAL: \$156,121

CHILDREN'S MIRACLE NETWORK HOSPITALS SUPPORT

These totals include all donations for CMNH from national sponsors, local sponsors, individuals and businesses. These funds have been, and will continue to be, a vital part of CHRISTUS Trinity Mother Frances Health System's success in providing the highest level of care for our smallest patients.

TOTAL: \$1,295,245



"Nothing can dim the light which shines from within." **Maya Angelou**

FRIENDS OF THE FOUNDATION

GIFT REPORT 2022

We are pleased to take this opportunity to thank and recognize our generous supporters. This year your gifts brought the light of hope for many and made an enduring impact on health care in Northeast Texas.

Thank you to the individuals, foundations and businesses who have made gifts from January 1, 2022 through December 31, 2022. Every effort has been made to ensure that this list is as complete and accurate as possible, but inevitably some errors or omissions may have occurred.

We appreciate receiving corrections, comments or questions. Please contact the CHRISTUS Trinity Mother Frances Foundation office at (903) 606-4752.

- Dr. Warren A. Abrameit**
Mr. Gerson H. Stearns
and Mrs. Helen C. Smith
Ms. Bettye L. Stallings
- Dr. Neil H. Adelman**
Mr. Alton M. Freeman
Mr. and Mrs. Lee D. Hamons
- Cassie Anderson, PA**
Mr. Julious Bailey
Ms. Joan Dorman
- Dr. Lawrence L. Anderson**
Mr. Richard E. Bolle
- Patricia Anding**
Ms. Janet L. Hendry
- Dr. Meredith A. Arnall**
Ms. Love M. Neukom
Ms. Preeni Walgama
- Dr. Joshua Barker**
Reverend and Mrs. Donald F. Osada
- Blake Barney**
Ms. Megan Barrett
Zoe and Lucy Mack
- Regina Battley**
Ms. Colleen D. Woodcock
- Dr. David H. Beaird**
Mr. and Mrs. Don Canter
Mr. and Mrs. Winston Green
Mr. Roy D. Owens
Mr. Charles N. Pappas
Mrs. Judy S. Wilmeth
- Cindy Bell**
Mr. Gerson H. Stearns
and Mrs. Helen C. Smith
- Dr. Russell Bell**
Mr. and Mrs. Richard A. Pinto
Ms. Betty Watson
- Loren and Melissa Bennett**
Mr. and Mrs. Allen Bell
- Joan Bentley**
Dr. Andrew E. Bentley
- Michelle Bentoski**
Mr. and Mrs. Jesse B. Ferrell
- Dr. Robert V. Blair**
Mr. and Mrs. Mark H. Brown
- Dr. Thomas W. Bochow**
Mr. Richard E. Bolle
- Dr. Margarete J. Borck**
Anonymous
- Dr. Angelique Brannon-Goedecke**
Dr. and Mrs. Paul W. Pitts
- Gillian and Harold Brasfield**
Mr. and Mrs. Allen Bell
- Dr. Jason Brockway**
Mr. Andrew Baird IV
- Dr. Melita L. Brooks**
Ms. Judith Dumas
Ms. Paula Gentry
Mr. Edgar D. Ilschner, Jr.
Ms. Pebble L. Kaup
Mr. John P. Myers
Ms. Bettye L. Stallings
- Roe and Ruth Buckley**
Mr. and Mrs. Allen Bell
- Dr. Sheryl Busch**
Anonymous
Mr. and Mrs. Jerry Thornton
Ms. Judy N. Whitton
- Dr. James A. Caccitolo**
Anonymous
Ms. Dora L. Session
- Dr. Angela N. Cade**
Mrs. Margherita M. Lahue
Dr. and Mrs. Paul W. Pitts
Mr. William R. Wiggins
- Dr. Pedro M. Calderon**
Mrs. Edith A. Brewer
Mrs. Mary E. Gregerson
- Suzanne and Galloway Calhoun III**
Mr. and Mrs. Allen Bell
- Dr. Aaron Calodney**
Mr. and Mrs. Larry G. Hack
- Dr. Andria Cardinali-Stein**
Dr. and Mrs. Tsauyu Lin
Mr. and Mrs. Michael Victor
- Dr. Billy Dan Carson**
Anonymous
Ms. Jo Ann Bass
Mr. and Mrs. Nolan L. Green
Mr. and Mrs. Thomas E. Yeager
- Harry Caserta**
Mr. and Mrs. Allen Bell
- Dr. Hector Ceccoli**
Ms. Linda E. Blakeman
Mr. Alton M. Freeman
- Dr. Nirmala Cheatham**
Anonymous
Ms. Bunnell Kennedy
- Sally and Jeff Cheavens**
Mr. and Mrs. Allen Bell
- Deb Chelette**
Ms. Kathryn Taylor
- Dr. Gilbert Chou**
Anonymous
- CHRISTUS Canton Emergency Department**
Mr. John Johnson
- Dr. Steven J. Cohen**
Mrs. Edith A. Brewer
Ms. Marsha Buchheit
Mr. and Mrs. Jim Truitt
- Dr. Karah Coker**
Ms. Jean Frisbie
Ms. Patricia L. Herring
Mr. and Mrs. Danny R. Potter
Mr. and Mrs. Ralph R. Richason
Ms. Madeline L. Unruh
Mr. and Mrs. Gary Wideman
- Dr. Allison Collins**
Mrs. Beverly J. Beranek
- Dr. Lester B. Collins III**
Ms. Barbara J. Payne
- Dr. Douglas C. Coltman**
Ms. J. Kathryn Boyd
- Ms. Mary L. Burns
Mr. and Mrs. F. B. Cadenhead, Jr.
Mr. Harold W. Cantrell
Mrs. Susan Z. Hawkins
Mr. and Mrs. C. W. Pilgrim
Ms. Cynthia J. Schorr
Mr. and Mrs. Gregory C. Weston
Mrs. Janice L. Wisner
- Dr. J. Stuart Crutchfield**
Mr. and Mrs. Robert L. Holsomback
- Tonya Curry**
Anonymous
- Dr. Kenneth D. Cushman**
Mrs. Martha A. Dykes
Mr. John M. Martin
Mrs. Donna J. McCoy
Ms. Ann S. Stone
- Dr. Thomas J. DeHaven**
Mr. and Mrs. Steven J. Camp
Mr. and Mrs. Freddie L. Geese
Mr. and Mrs. Robert L. Stafford
- Amy Dellenny PA-C**
Mr. and Mrs. Bernard McKinney
- Dr. Rachel L. Devaney**
Mr. and Mrs. Jim Truitt
- Dr. Raman Dhillon**
Ms. Anita J. Warren
- Dr. David M. Dick**
Ms. Mary Rogers
- Cathy and Bob Dougherty**
Mr. and Mrs. Allen Bell
- Dr. Jacob Dougherty**
Mr. Andrew Baird IV
- Dr. H. Katrina Duplechain**
Mr. and Mrs. Steven J. Camp
Ms. Barbara J. Payne
Mr. Gerson H. Stearns
and Mrs. Helen C. Smith
Mr. and Mrs. Ronnie D. Taylor
- Dr. Terri L. Eckert**
Ms. Jacqueline K. Kerlin
- Dr. Alan Eli**
Anonymous
Mr. and Mrs. Kit Campbell
Mr. and Mrs. Robert A. Crosson
Mr. and Mrs. Randy K. Durossette
Mr. and Mrs. Doyle W. Johnson
Mr. and Mrs. Hugh E. Kirksey
Mr. John T. Mann
Mr. and Mrs. Bernard McKinney
- Dr. Sam Eljammal**
Anonymous
- Dr. Andrea M. Ellis**
Mr. and Mrs. Robert L. Holsomback
- David J. Eriksen**
Mrs. Sharon M. Eriksen
- Dr. Neda Esfandiari**
Mr. Louis Henderson
Mrs. Margaret S. Thurmond
and Mr. Dennis Baker
- Dr. Paul M. Fanning**
Ms. Linda M. Nichols
- Ann Marie Fate, FNP-C**
Ms. Linda E. Blakeman
Mr. Louis Henderson
Dr. and Mrs. Jack D. Hollada, DC
- Mary Lauren Faulkner**
Ms. Virginia Hensarling
- Mike Fitzpatrick**
Mr. and Mrs. Allen Bell
- Dr. Marina Y. Flaskas**
Mr. and Mrs. Lonnie A. Chadwick
Ms. Dora L. Session
- Dr. Roel O. Flores, Jr.**
Mr. Danny L. McKethan
- Anita and Scott Fossey**
Mr. and Mrs. Lindsey Bradley
- Dr. Robert W. Frederick**
Mr. and Mrs. Chris Woldert II
- Dr. Sheldon Freeberg**
Mr. Richard E. Bolle
Ms. Billie Cade
Mr. and Mrs. Albert Moellenbeck
- Dr. L. Don Freeman**
Ms. Audry S. Fincher
Mrs. Martha G. Humphries
Mr. and Mrs. Gary Wideman
- Pam and Matt Gabriel**
Mr. and Mrs. Allen Bell
- Don Garrett**
Mr. and Mrs. Allen Bell
- Megan and Paul Generale**
Mr. and Mrs. Lindsey Bradley
- Dr. Raghavendra V. Ghuge**
Mr. Richard E. Bolle
- Dr. Jason Gipson**
Mr. Donald H. Etheredge
- Shannon and Chris Glenney**
Mr. and Mrs. Lindsey Bradley
- Dr. Virginia Y. Gonzales**
Mr. and Mrs. Jerry Thornton
Mr. and Mrs. Chris Watkins
- Shirley T. Gordon**
Dr. and Mrs. Harold U. Everett, Jr.
- Dr. Kevin D. Green**
Mr. and Mrs. C. W. Pilgrim
- Mandy Green, FNP-C**
Mr. and Mrs. Roger S. Strain
- Dr. Thomas F. Gregory**
Ms. Diane M. Gunter
Mrs. Martha G. Humphries
Mr. Roy D. Owens
- Dr. Kyle L. Gully**
Mr. and Mrs. Dean C. Gatlin
Mr. and Mrs. Claud W. Hardie
- Jess and Jerry Hamilton**
Mr. and Mrs. John C. Arledge, Jr.
- Jana and Todd Hancock**
Mr. and Mrs. Lindsey Bradley

- Dr. W. Bruce Harrell**
Ms. Billie Cade
Mr. and Mrs. Kit Campbell
Mr. Donald G. Pence
- Dr. Hayden G. Head**
Mr. Michael C. Bell
Mrs. Jean A. Jordan
Mr. and Mrs. Roger S. Strain
- Leesa and Raymond Hedge**
Mr. and Mrs. Allen Bell
- Dr. Richard Hilborn**
Mr. Donny Dennis
- Dr. William R. Hobbs**
Dr. and Mrs. Tsauyu Lin
Mr. John M. Martin
- Dr. Doug Hodde**
Ms. Dorothy B. Tarver
- Dr. Terri L. Hoffman**
Anonymous
- Dr. Timothy L. Holcomb**
Mr. and Mrs. Robert A. Crosson
Mr. and Mrs. Ronald Magness
- Katelyn and Daniel Holland**
Mr. and Mrs. Terry L. Parsons
- Gaylene Horn**
Mr. and Mrs. Allen Bell
- Dr. Jonathan C. Hosch**
Mr. and Mrs. Doyle W. Johnson
- Dr. Zehra Hussain, D.O.**
Ms. Ruth Ann Smith
- Dr. Julia D. Hwang**
Ms. Marsha Buchheit
Ms. Emma J. Henson
Dr. and Mrs. Tsauyu Lin
Mr. and Mrs. Anthony M. Martin
Mr. and Mrs. Michael Victor
Mr. and Mrs. John D. Yates
- Dr. C. Noah Israel**
Mr. Stephen W. Cary
- Mr. Kyle J. Jackson**
Ms. Louise I. Gilbreath
- Mary Elizabeth and Alan Jackson**
Mr. and Mrs. Lindsey Bradley
- Dr. Burkitt W. Jensen**
Mr. and Mrs. Gregory C. Weston
Mr. Henderson D. Young
- Dr. Christopher J. Johnson**
Ms. Nan Mann
- Dr. Edward W. Johnson**
Mr. Stephen W. Cary
Mr. Jack L. Herrington
- Jamie Johnson, FNP-C**
Anonymous
- Kipper L. Jones, FNP**
Mr. Ronnie E. Odom
- Dr. George W. Kariampuzha**
Mr. and Mrs. Randy K. Durossette
Mr. and Mrs. C. W. Pilgrim
- Dr. Sylvia A. Kariampuzha**
Mr. Henderson D. Young
- Dr. Steven P. Keuer**
Mr. and Mrs. Tommy Bennington
Mr. and Mrs. Melvin R. Nutt
Mr. and Mrs. Chris Woldert II
- Debbie and Steve P. Keuer, M.D.**
Mr. and Mrs. Lindsey Bradley
- Jan and Denning Key**
Mr. and Mrs. Allen Bell
- Dr. Andrew K. Kirkpatrick**
Mr. and Mrs. Lindsey Bradley
Mr. Gary W. Frederick
Ms. Emma J. Henson
Mr. Clyde M. Mills
Mr. Roy D. Owens
Mr. Gerson H. Stearns
and Mrs. Helen C. Smith
Mr. and Mrs. Paul Taft
- Dr. Ramon Kumar**
Anonymous
Mr. and Mrs. Albert Moellenbeck
Ms. Madeline L. Unruh
- Dr. Kenneth B. Kummerfeld**
Anonymous
Mr. Andrew Baird IV
Ms. Jo Ann Bass
Ms. Mattie O. Palmer-Bates
Mr. Donald G. Pence
Mr. and Mrs. Richard A. Pinto
Ms. Julia Watkins
- Dr. John A. Lahourcade**
Ms. Billie Cade
Mr. and Mrs. Marshall E. Roberts
Ms. Anita J. Warren
- Dr. Austin T. Lash**
Mr. Richard E. Bolle
- Dr. Arielle S. Lee**
Ms. Khom Chea
- Dr. Feng Li**
Ms. Diane M. Gunter
Ms. Love M. Neukom
- Dr. Scott M. Lieberman**
Ms. Nan Mann
- Dr. Tsauyu Lin**
Mr. Gary W. Frederick
Mr. Donald G. Pence
- Dr. Amanda N. Long**
Mr. Gerson H. Stearns
and Mrs. Helen C. Smith
- Dr. Richard W. Lowry, Jr.**
Ms. Dorothy B. Tarver
- Dr. Ming Lu**
Mr. and Mrs. Randy K. Durossette
Mr. Roger McLaughlin
Ms. Ruth Ann Smith
Ms. Dorothy B. Tarver
- Pamela MacKay, FNP-C**
Ms. Marie I. Kennedy
- Mr. Anthony Maldonado**
Anonymous
- Marty and Brian Margetts**
Mr. and Mrs. Lindsey Bradley
- Dr. Leslie Markle**
Mr. Richard E. Bolle
- Dr. Joseph M. Martellotto**
Mr. Gerson H. Stearns
and Mrs. Helen C. Smith
- Dr. Joseph T. Martins**
Ms. Ellen Bjornson
- Julie and Randy Massad**
Mr. and Mrs. Allen Bell
- Dr. Marc Matarazzo**
Mr. Andrew Baird IV
- Bert McCain**
Mr. and Mrs. Allen Bell
- David M. McCaskill, PA-C**
Ms. Bobbie J. Rice
- Dr. Martha L. McCollough**
Ms. Marilyn E. Fowler
- Dr. Roger L. McCown II**
Mr. and Mrs. Don Canter
Mr. Ronnie E. Odom
Ms. Madeline L. Unruh
- Dr. Scott R. McDermott**
Ms. Shirley Kight
- Dr. William W. Miller**
Mrs. Judith R. Glenney
- Dr. Randall T. Murff**
Mr. Gerson H. Stearns
and Mrs. Helen C. Smith
- Ronnie Nash, PA-C**
Mr. Gerald P. Coughlin
- Dr. Eileen Neff**
Mr. and Mrs. James Gillingham
- Dr. Kenneth Nixon**
Mr. and Mrs. Lonnie A. Chadwick
Ms. Patricia A. McCammon
Ms. Reba N. Stone
- Dr. Kevin A. Nixon**
Ms. Billie Cade
Mrs. Martha G. Humphries
- Dr. Michael J. Norton**
Mr. and Mrs. Bruce C. Faulkner
- Dr. P. Daniel Obesso**
Mr. and Mrs. Freddie L. Geese
Mr. and Mrs. Gregory C. Weston
- Dr. Laura E. O'Halloran**
Ms. Jean Connell
Ms. Frankie O. Ferguson
Mr. Jerry F. Fontaine
Mr. and Mrs. Roger S. Strain
- Dr. Esosa Okon**
Mr. and Mrs. Scott Chelette
- Dr. Lloyd M. Olsen**
Ms. Mary Tidwell
- Charlotte and John Owen**
Mr. and Mrs. Allen Bell
- Dr. Jordan M. Owens**
Mr. and Mrs. Freddie L. Geese
Ms. Linda M. Nichols
- Bonnie F. Pace**
Mr. John Pace
- Dr. John J. Page**
Ms. Almarie C. Smith
- Dr. Nima Pakzad**
Mr. Kenneth D. Ables
- Dr. Oscar A. Paniagua**
Mr. Jack L. Herrington
Ms. Shirley Kight
- Dr. Jayesh K. Patel**
Mr. and Mrs. Melvin R. Nutt
- Dr. Shreya V. Patel**
Mrs. Judith R. Glenney
- Dr. Todd A. Patrick**
Mr. Jack K. Bell
Mr. and Mrs. Dean C. Gatlin
Mr. Gerson H. Stearns
and Mrs. Helen C. Smith
- Chaplain Paul**
Mr. Andrew Baird IV
- Dr. Kevin R. Paul**
Mrs. Doris Harris
Ms. Pauline L. Smith
- Dr. Alexandre A. Petrakian**
Dr. and Mrs. Jack D. Hollada, DC
- Renata Peyreau C-GNP, FNP, RN**
Mr. and Mrs. Lee D. Hamons
- Julie Pharr**
Mr. Mike Medders
- Dr. Erin L. Phillips**
Ms. Billie Cade
- Dr. Peter Pitonak**
Ms. Barbara Davis-Scott
Ms. Audry S. Fincher
Mr. and Mrs. Nolan L. Green
Mr. John T. Mann
Mr. Alan Quinn
Mr. and Mrs. Ralph R. Richason
- Dr. Paul W. Pitts**
Mrs. Deborah D. Pitts
- Dr. George M. Plotkin**
Ms. Jean Frisbie
- Rebecca Powell, FNP**
Mr. Jack K. Bell
Ms. Patricia Davis
- Dr. Anna Priebe**
Mr. and Mrs. Lee D. Hamons
Ms. Kaye F. Miller
- Jason J. Proctor**
Mr. and Mrs. Bruce C. Faulkner
Mr. and Mrs. James D. McClure
- Shanda and Jason Proctor**
Mr. and Mrs. Lindsey Bradley
- Dr. Matthew T. Proctor**
Ms. Linda K. Hughes
- Mary and Jeff Puckett**
Mr. and Mrs. Lindsey Bradley
- Dr. James Qualls**
Mr. Jerry E. Richbourg
- Dr. Jane T. Ragland**
Mr. and Mrs. Tim Birmingham
Ms. Betty S. Easley
- Dr. Paul A. Rath**
Mr. Ronnie E. Odom
- Dennis Reeves**
Mr. and Mrs. Robert J. McQuaid
- Dr. Lee H. Ridenour**
Mrs. Denise Black
Mrs. Nancy Ireland
Dr. John L. LaNoue
Mr. and Mrs. Randy Neal
Ms. Betty J. Wright
- Stephanie and Randy Roberts**
Mr. and Mrs. Allen Bell
- Robin W. Rowan**
Mr. and Mrs. Dennis E. Box
- Robin and Mike Rowan**
Mr. and Mrs. Lindsey Bradley
- Dr. Michael E. Russell II**
Mr. Michael B. McGinney
- Dr. Joshua Rutland**
Mr. and Mrs. Robert Formoso
- Ms. Stephanie Ryle**
Anonymous



Roxanne and Ernie Sadau
Mr. and Mrs. Lindsey Bradley

Robert Sadler
Mrs. Sheila Sadler

Shirley and Randy Safady
Mr. and Mrs. Lindsey Bradley

Dr. C. Fagg Sanford
Ms. Patsy James
Ms. Burnell Kennedy

Charlotte and Fagg Sanford, M.D.
Mr. and Mrs. Lindsey Bradley

Scott T. Satterfield
Mr. and Mrs. Danny R. Potter
Mr. and Mrs. Thomas E. Yeager

Dr. Mark W. Saunders
Mr. Roy D. Owens

Dr. Heidi E. Schneider
Ms. Melissa S. Deakins
Mr. and Mrs. Randy K. Durossette
Ms. Jacqueline K. Kerlin

Dr. Hans D. Schuricht
Mrs. Mary E. Gregerson
Mr. Jack L. Herrington
Mr. and Mrs. Albert Moellenbeck
Mr. Roy D. Owens
Mr. Gerson H. Stearns
and Mrs. Helen C. Smith

Dr. Jerry W. Schwarzbach
Mr. Michael B. McGinney

Dr. Richard H. Seidel, Jr.
Mrs. Judith R. Glenney
Mr. and Mrs. Paul Taft

Dr. Richard B. Sharp
Mr. Donny Dennis

Dr. Hope Short
Ms. Marilyn E. Fowler

Chris Simons
Mr. and Mrs. Allen Bell

Dr. Amy K. Simpson
Mr. Richard E. Bolle

Dr. John B. Sims
Anonymous
Mr. and Mrs. Steven J. Camp
Ms. Diane M. Gunter
Mr. John T. Mann
Mr. Roy D. Owens
Mr. and Mrs. Ralph R. Richason

Dr. Suman Sinha
Anonymous
Ms. Khom Chea
Mr. and Mrs. Dean C. Gatlin
Ms. Dremma K. Haywood
Mr. and Mrs. Doyle W. Johnson
Mr. and Mrs. Ronald VandenBerg

Dr. Suman Sinha and Staff
Mr. and Mrs. Mickey R. Grubbs

Dr. Christopher M. Sirianni
Mr. and Mrs. Bernard McKinney

Dr. Peter A. Sirianni
Mrs. Beverly J. Beranek

Dr. Kyle J. Smith
Ms. Marilyn E. Fowler

Dr. Mike Smith
Mr. Jerry F. Fontaine

Dr. Todd P. Smith
Ms. Marie I. Kennedy
Mr. Gerson H. Stearns
and Mrs. Helen C. Smith

Dr. Jagdeep Sodhi
Mr. and Mrs. Gary Wideman
Mr. and Mrs. Chris Woldert II

Dr. Glen W. Sorrentino
Anonymous
Mr. Henderson D. Young

Dr. Stephen Spain
Mr. and Mrs. Jack R. Brown

Dr. Charla C. Spencer
Mr. and Mrs. Bruce C. Faulkner

Dr. Melissa Springmeyer
Mr. Stephen W. Cary

Dr. James N. Stanford
Mr. Jean A. Morgan
Ms. Donna Scott
Mr. and Mrs. Robert C. Thompson

Katie Storrs, PA-C
Mr. and Mrs. Michael Victor

Dr. Sasha Strain
Mr. and Mrs. Nolan L. Green
Molly Ann Hickman Estate

Dr. Sasha Strain and Team
Ms. Ellen Bjornson

Dr. Jingdong Su
Ms. Anita J. Warren

Technican Daniel
Anonymous
Suzie and David Teegarden, M.D.
Mr. and Mrs. Lindsey Bradley

Dr. Sherri L. Ten Pas
Mr. Donald H. Etheredge

Dorothy L. Thrower
Mr. and Mrs. Allen Bell

Bonnie A. Tincher, CNS
Ms. Ruth Ann Smith

Dr. Brandon A. Tinkler
Ms. Ruth Ann Smith

Dr. Michael Tobes
Mr. and Mrs. Larry F. Harrelson

Dr. William C. Tompkins Jr.
Mr. H. D. Grace

Dr. Phyllis Trotter
Mr. Richard E. Bolle

Dr. Ryan Tubre
Mr. Jerry E. Richbough

Dr. William F. Turner, Jr.
Mr. and Mrs. Lonnie A. Chadwick
Mr. Edgar D. Ilschner, Jr.

Wendy and Jim Van Deventer
Mr. and Mrs. Allen Bell

Dr. Matthew A. Vierkant
Mrs. Beverly J. Beranek

Dr. Mark E. Vig
Mr. and Mrs. David Bain
Mr. Billy D. Buford
Mrs. Doris Harris
Ms. Dora L. Session

Dr. Thomas B. Volatile
Ms. Tinnie Guidry

Dr. Ronald F. Vrnak
Mr. Michael B. McGinney

Dr. Svetislava J. Vukelja
Mr. and Mrs. John A. McComic

Dr. R. Brent Wadle
Ms. Dremma K. Haywood
Mr. Joseph A. Nolen, Jr.

Dr. Ellen S. Walraven
Mrs. Mary E. Gregerson

Dr. Stanislav Weiner
Mr. and Mrs. Tim Birmingham

Ms. Jean Frisbie
Mrs. Lee A. Hyde

Mr. John T. Mann
Ms. Fayrene Stokes
Mr. and Mrs. Rodney R. Wedel

Dr. Lauren White
Ms. Barbara Davis-Scott

Laura E. Whitfield, NP
Dr. John L. LaNoue

Dr. Charles Williams
Mr. Andrew Baird IV

Dr. Jennifer R. Wilson
Anonymous

Dr. O. Ray Wilson
Ms. Linda E. Blakeman
Mr. and Mrs. Alton J. Cannon
Mr. Gerald P. Coughlin
Mr. Louis Henderson
Mr. and Mrs. Ronald G. Hightower
Dr. and Mrs. Jack D. Hollada, DC
Mr. and Mrs. Melvin R. Nutt
Mr. and Mrs. Paul Taft
Dr. and Mrs. Herschel W. Tipton

Debbie and Chris Woldert II
Mr. and Mrs. Allen Bell

Dr. Kai Xia
Mr. and Mrs. Harold R. Denson
Mr. and Mrs. Randy K. Durossette
Mr. and Mrs. Bruce C. Faulkner
Mr. Aubrey D. Ingram
Mr. Roy D. Owens
Dr. Mark D. Prince
Mr. Gerson H. Stearns
and Mrs. Helen C. Smith

Drs. Kai Xia and Weijia Su
Mr. and Mrs. Lindsey Bradley

Jeffrey B. Yarbrough, NP
Ms. Louise I. Gilbreath

Dr. Daren P. Yeager
Mr. and Mrs. James Gillingham
Mr. and Mrs. Thomas E. Yeager

Dr. Habte Yimer
Ms. Emma J. Henson

Dr. Joseph Zasik
Mr. Andrew Baird IV
Ms. Jo Ann Bass
Ms. Barbara Davis-Scott

Dr. Anne Zeorlin
Ms. Pauline L. Smith



Daniel Ahearn

Mrs. Marie Ahearn

J. W. Allen

Mrs. Susan Rae Stefanek

Laurie A. Allen

Mr. Philip Allen

W. R. Baggett, Jr.

Mrs. Pat R. Baggett

J. P. Benedict

Mrs. Brenda Benedict

Paul K. Bitter

Mrs. Marilyn M. Thompson

Steve Black

Mrs. Denise Black

Vivian G. Britton

Mr. Robert L. Britton

R. Jack Bryans

Mr. and Mrs. Mike G. Hines

Ann Bunch

Ms. J. Kathryn Boyd

Christine K. Carter

Mr. Charles Carter

Don C. Chancelor

Ms. Janey Lowe

Josephine M. Couser-Fulton

Mr. Charles C. Couser

John D. Culpepper

Ms. Linda A. Culpepper

Bonnie Cunningham

Mr. and Mrs. Lee S. Portwood

Jane Derus

Mrs. Marilyn M. Thompson

Bernadine Dubry

Mr. and Mrs. Freddie G. Harvey

Jimmy L. Ferguson

Anonymous

Ms. Cynthia Fontes

Ms. Sondra K. Ivy

Jim Golring

Mr. and Mrs. Joe D. Huffaker

James Goodbread

Mr. and Mrs. James Z. Parker

Ruth H. Goss

Pat McKay

Vickey M. Green

Anonymous

Pat Griffioen

Mr. and Mrs. Joe D. Huffaker

Roy Gross

Mr. and Mrs. Joe D. Huffaker

Georgieanna Harris

Anonymous

William C. Hearron

Mrs. Charlene Hearron

Bill Hendrix

Mrs. Betty L. Holitzke

Molly Hickman

Molly Ann Hickman Estate

Dr. Jennifer Jenkins-Diotallevi

Dr. Sebetha Jenkins-Booker

Lawrence Kaczmarek

Mr. and Mrs. Joseph Svesko, Jr.

Shirley Kallstrom

Ms. Redonna H. Fiammi

Geneva King

Mr. and Mrs. Scottie L. Clark

Rodney D. Kolac

Ms. Mary Kolac

Anne Lawrence

Ms. Kay S. Bracken

Joe and Marie Leavins

Mr. and Mrs. Billy J. Langley

Rush Limbaugh

Mr. and Mrs. James H. Burkel

Mickey Link

Mr. and Mrs. William C. Kainer

Alice Long

Anonymous

Coretta Love

Ms. Bertha P. Johnson

Erenstino Martinez

Mrs. Consuelo M. Martinez

James D. McClure

American Veterinary Medical Association

Anonymous

Mr. Gary Bristow

Mr. and Mrs. Brett R. Cavett

Ms. Cherron M. Chambers

Mr. and Mrs. Robert E. Cliver

EMA Engineering & Consulting, Inc.

Mr. and Mrs. Jim Gillen, Jr.

Ms. Mary Ann Griffith

Harris Craig Architects

Mr. and Mrs. Johnny Hibbs

Ms. Carol H. Holle

Mr. and Mrs. Mark T. Lutschaunig

Pledgeling Foundation

Mr. and Mrs. Richard R. Ring

Mr. Blake Stowe

Ms. Janet L. Suther

Mr. and Mrs. Brian L. Thompson

Mrs. Marilyn M. Thompson

Mr. and Mrs. Richardo L. Trewyn

Ms. Evelyn C. Turlington

Mr. and Mrs. William A. Waldroop

Taneen J. Neumyer

Ms. Carolyn J. Hanson

Herod Nickerson

Mrs. Betty Nickerson

Hubert Nutt

Mr. and Mrs. Melvin R. Nutt

Hong-Kyu Park

Mrs. Younghea Park

Jimmie and Marcie Parker

Ms. Ardy's Harwood

Connie Payne

Mr. James G. Payne

Jackie Platter

Ms. Barbara G. Marshall

Susie Redford

Mr. William F. Redford

Pat Richey

Mrs. Marilyn M. Thompson

Vida Gay Richter

Mr. Bruce A. Richter

Donald W. Robertson

Mrs. Linda M. Robertson

Chris Rosamond

Mr. and Mrs. Robert L. Stafford

John F. Ryder

Dr. and Mrs. James F. Ryder

Jane Seals

Ms. Sarah J. Macpherson

C. W. Smith

Mr. and Mrs. Don Kirkland

Dolores H. Thompson

Mr. Robert C. Thompson

Tina Thompson

Mr. and Mrs. John Ott

Melissa Toon

Mr. and Mrs. Jackie L. Toon

Dr. John C. Turner, Jr.

Ms. Audrey S. Fincher

Mary Ann Wallace

Mr. Don F. Wallace

Bland Ward

Ms. Deborah K. Marshall

Mr. and Mrs. David E. Marshall

Mary M. West

Mr. and Mrs. Edward Shadbolt

Ms. Elke M. Wieland

Dr. Rogelio R. Velez and Dr. Ivonne Varga



Mr. Kenneth D. Ables
 Mr. Austry Acrey
 Mr. and Mrs. James D. Adams, Jr.
 Mr. Walter S. Adcock
 Dr. Sara Adibi
 Ms. Maria E. Alaniz
 Mr. and Mrs. Curtis Allen
 Mr. Lee J. Allen
 Ms. Myrtle A. Allen
 Dr. and Mrs. Brian C. Allgaier
 Ms. Janyce R. Allison
 Ms. Janice C. Alvarez
 American Legion Auxiliary
 Mrs. Nell K. Amos
 Mr. Joe D. Anderson
 Dr. and Mrs. Mark R. Anderson
 Ms. Shirley A. Anderson
 Anonymous
 Ms. Cecile E. Anthony
 Mr. John F. Antley
 Mr. Gerald D. Armstrong
 Mr. Fred J. Arrambidez
 Mr. Rodin H. Arroyo
 Ms. Lorene Ashby
 Ms. Mary S. Atwill
 Austin Bank
 Mr. Julious Bailey
 Mr. and Mrs. David Bain
 Drs. Harshivinderjit S. and Neena Bain
 Mr. Andrew Baird IV
 Ms. Shirley A. Baker
 Mr. Pat Baldwin
 Ms. Terry B. Ball
 Ms. Sylvia B. Barbee
 Mr. and Mrs. Clyde Barber
 Mr. Larry J. Barnes
 Ms. Blanca V. Barrett
 Ms. Martha J. Barton
 Mr. and Mrs. Kevin Basham
 Mr. and Mrs. Johnny M. Bass, Jr.
 Mr. James O. Batchelor
 Mr. N. Raymond Batchelor
 Mr. and Mrs. Trevor Bates
 Mr. and Mrs. T. J. Baynham Jr.
 Mr. Don L. Beasley
 Mr. and Mrs. Allen Bell
 Mr. Jack K. Bell
 Ms. Martha E. Bell
 Mr. Michael C. Bell
 Dr. Andrew E. Bentley
 Mrs. Beverly J. Beranek
 Mr. John F. Bickerdike
 Ms. Rosemary Biel
 Mr. and Mrs. Larry D. Bielak
 Mr. Hossein Bijani
 Mr. and Mrs. Ali R. Birjandi
 Mr. and Mrs. Tim Birmingham
 Ms. Ellen Bjornson
 Mrs. Denise Black
 Mr. Wilbert Black
 Ms. Linda E. Blakeman
 Ms. Berta L. Blalock
 Mr. and Mrs. Keenan L. Boehme
 Mr. Richard E. Bolle
 Mr. and Mrs. Ferdinand J. Boutin
 Mr. and Mrs. James H. Bowers
 Mr. Jeffrey W. Boyd
 Ms. J. Kathryn Boyd

Dr. and Mrs. Christopher S. Boylan
 Mr. and Mrs. Lindsey Bradley
 Mr. Thomas A. Braeuninger
 Mr. and Mrs. Billy Braly
 Mr. and Mrs. Karl L. Branam
 Mr. and Mrs. Steve Bratteli
 Mr. Charlie C. Brewer
 Mrs. Edith A. Brewer
 Mr. Robert T. Bridges
 Mrs. Gerrie A. Brooke
 Ms. Carolyn Brooks
 Ms. Paula S. Brooks
 Mr. Ray O. Brooks
 Mr. and Mrs. Jack R. Brown
 Mr. and Mrs. Mark H. Brown
 Ms. Rose K. Brown
 Mr. Roland H. Browne
 Mr. David M. Brunswig
 Ms. Dana Bryant
 Mr. Rickie C. Bryant
 Mr. and Mrs. Daniel M. Buchanan
 Ms. Marsha Buchheit
 Mr. Billy D. Buford
 Mr. Billy L. Burkhammer
 Ms. Eleta B. Burns
 Ms. Martha H. Burns
 Ms. Mary L. Burns
 Ms. Marilyn R. Burwitz
 Ms. Donna Butler
 Mr. and Mrs. John L. Button
 Byers Family Partnership, Ltd.
 Mr. Marvin L. Byers
 Ms. Beth S. Byrd
 Mr. and Mrs. Douglas M. Byrd, Jr.
 Mr. Alfred A. Byrnes
 Ms. Billie Cade
 Mr. and Mrs. F. B. Cadenhead, Jr.
 Ms. Erma Cain
 Mr. and Mrs. Hubert M. Cameron
 Mr. and Mrs. Martin Cameron
 Ms. Joyce Camp
 Mr. Randy Camp
 Mr. and Mrs. Steven J. Camp
 Ms. Doris A. Campbell
 Mr. and Mrs. Kit Campbell
 Mr. Steve Campbell
 Ms. Eleanor A. Camungol
 Mr. and Mrs. Alton J. Cannon
 Mr. Charles Cannon
 Mr. and Mrs. Don Canter
 Mr. and Mrs. Zeb Cantley
 Mr. Harold W. Cantrell
 Mr. and Mrs. Jimmy H. Cantrell
 Mr. Joseph A. Capps
 Ms. Sandra J. Carlin
 Ms. Maria D. Carmona
 Mr. and Mrs. Don E. Carroll
 Ms. Tina A. Carroll
 Mr. Stephen W. Cary
 Ms. Mary Cates
 Mr. Alfred J. Cathcart
 Mr. and Mrs. Lonnie A. Chadwick
 Ms. Khom Chea
 Mr. Ron D. Cherry
 Mr. Leon Christopher
 CHRISTUS Health
 Ms. Billie Church
 Ms. Dorothy H. Clark

Ms. Judy R. Clark
 Mr. and Mrs. Lynn Clark
 Mr. and Mrs. Scotte L. Clark
 Mr. and Mrs. Bill Clary
 Ms. Mary A. Cloyd
 Mr. Larry J. Coker
 Mr. Bruce A. Coleman
 Ms. Linda J. Coleman
 Mr. Gerald K. Collins
 Dr. and Mrs. Lester B. Collins III
 Mr. Jack W. Combs, Jr.
 Mrs. Lois A. Compton
 Ms. Susan J. Comte
 Ms. Jean Connell
 Mr. Robert S. Cook
 Mrs. L. Anne Cooper
 Ms. Paulette S. Cooper
 Mr. and Mrs. W. Paul Cooper
 Mr. and Mrs. M. L. Cornett
 Mr. Joe Costello
 Mr. and Mrs. Ronnie D. Coston
 Mr. Gerald P. Coughlin
 Ms. Nona Couture
 Mrs. Mary H. Covey
 Ms. Emma P. Cowles
 Ms. Mary E. Cox
 Mr. Billy G. Craig
 Mrs. Evelyn Craig
 Mr. and Mrs. Rodney J. Craig
 Ms. Jo A. Cram
 Mr. and Mrs. Robert A. Crosson
 Dr. and Mrs. J. Stuart Crutchfield
 Mr. and Mrs. John C. Cumming
 Mr. and Mrs. Sanford J. Cundiff, Jr.
 Dr. Steven A. Curley
 Ms. Jane Currey
 Ms. Dorothy Curry
 Mr. and Mrs. Robert C. Curtis
 Dr. and Mrs. Kenneth D. Cushman
 Ms. Darlene D. Dailey
 Ms. Edrie I. Dalton
 Mr. Terry M. Dandrea
 Mr. and Mrs. Gale Daniels
 Mrs. Marcia O. Daughtrey
 Mr. and Mrs. John H. Davidson
 Ms. Eileen B. D'Avignon
 Mr. and Mrs. B. Frank Davis, Jr.
 Mr. and Mrs. Charles B. Davis
 Mr. Edward D. Davis II
 Mr. and Mrs. Jeff Davis
 Ms. Lue S. Davis
 Ms. Patricia Davis
 Mr. and Mrs. Robert Davis
 Ms. Judy L. Davis-Hill
 Ms. Barbara Davis-Scott
 Ms. Juanita Dawson
 Mrs. Martha D. Day
 Ms. Melissa S. Deakins
 Ms. Pamela Dealca-Camba
 Mr. and Mrs. Don S. Dennis
 Mr. and Mrs. Harold R. Denson
 Dr. Rachel and Mr. Matthew DeVaney
 Mr. and Mrs. David S. Deznar
 Mr. and Mrs. Ken Dietz
 Mrs. Danna B. Dillard
 Ms. Alice R. Dingler
 Ms. Joan Dorman
 Ms. Charlene V. Dossett

Mr. and Mrs. George E. Drake
 Mr. and Mrs. Stephen R. Drake
 Mr. and Mrs. Douglas C. Dretzke
 Mr. William T. Drozd
 Ms. Tea K. Dudley
 Mr. and Mrs. Wilburn L. Dudley
 Ms. Linda H. Duke
 Ms. Judith Dumas
 Mr. and Mrs. Ronald W. Duncan
 Mr. and Mrs. Randy K. Durossette
 Mrs. Karen B. Dye
 Mrs. Martha A. Dykes
 Mr. and Mrs. Billy J. Dyson Sr.
 Dr. and Mrs. David R. Earhart
 Ms. Betty S. Easley
 Mrs. Sandra Easley
 Ms. Clara L. Edwards
 Mr. and Mrs. Melvin D. Eggleston
 Mr. and Mrs. John M. Eiche
 Mr. and Mrs. Mourad G. El-Cassabgui
 Mr. Robert B. Elliott
 Ms. Gloria W. Ellis
 Mr. and Mrs. Jim Ellis
 Mrs. Sandra C. Emerine
 Mr. Ervin Emmert
 Mrs. Johanna F. Essenwanger
 Ms. Victoria C. Estacio
 Ms. Helen Estep
 Mr. Donald H. Etheredge
 Ms. Karen Evans
 Ms. Donna Everett
 The R. W. Fair Foundation
 Mr. Phillip H. Farrington
 Mr. and Mrs. Bruce C. Faulkner
 Ms. Sharon L. Favors
 Ms. Mary Lou L. Fears
 Ms. Frankie O. Ferguson
 Ms. Mary M. Ferguson
 Mr. and Mrs. Jesse B. Ferrell
 Ms. Redonna H. Fiammi
 Mrs. Mary L. Field
 Mr. Roy W. Fields
 Ms. Audry S. Fincher
 Mr. and Mrs. Ron Finley
 Ms. Ruth C. Fisher
 Ms. Ruth M. Fisher
 Mr. and Mrs. Bobby D. Fitzgerald
 Ms. Felicitas Flores
 Mr. William J. Flores
 Mr. Jerry F. Fontaine
 Mr. and Mrs. Robert Formoso
 Ms. Ethel L. Fort
 Mr. Gary S. Fortier
 Mr. and Mrs. Scott F. Fossey
 Ms. Mary D. Foster
 Ms. Marilyn E. Fowler
 Mr. and Mrs. Billy Fox
 Mr. Gary W. Frederick
 Dr. and Mrs. Robert W. Frederick
 Mr. Alton M. Freeman
 Ms. Jean Frisbie
 Mr. and Mrs. Maurice E. Fritz
 Mr. Edward Furler, Jr.
 Mr. and Mrs. Clyde R. Futrell
 Mr. and Mrs. Wilford V. Gabbard
 Mr. Jose N. Galvan
 Mr. and Mrs. Leonardo Garcia
 Ms. Liduvina Garcia

Mr. Willard B. Gardner
 Mr. Jody P. Garner
 Mr. Jose Garza, Sr.
 Mr. and Mrs. Dean C. Gatlin
 Mr. and Mrs. Freddie L. Geese
 Ms. Paula Gentry
 Mr. James R. Gerhart
 Mr. and Mrs. J. W. German
 Mr. and Mrs. Thomas C. Gibson
 Mr. and Mrs. Russell S. Gideon
 Ms. Louise I. Gilbreath
 Mr. and Mrs. Terry Giles
 Mr. and Mrs. Thomas W. Gilley
 Mr. James S. Gillingham
 Mr. and Mrs. James Gillingham
 Ms. Vera L. Gipson
 Mr. Rodney Givens
 Mrs. Judith R. Glenney
 Mr. and Mrs. J. Christopher Glenney
 Ms. Mary A. Goff
 Mrs. Laverne W. Gollob
 Mr. John D. Gondol
 Ms. Peggy V. Gonzalez
 Mr. Carolyn S. Green
 Mr. and Mrs. Nolan L. Green
 Mr. and Mrs. Winston Green
 Mr. and Mrs. Samuel J. Greenberg
 Mrs. Mary E. Gregerson
 Mrs. Jackie S. Gregory
 Ms. Tinnie Guidry
 Ms. D. P. Gunn
 Ms. Diane M. Gunter
 Mr. and Mrs. Gary R. Haag
 Mr. and Mrs. Larry G. Hack
 Mr. and Mrs. John P. Hacker
 Dr. and Mrs. J. Michael Hackney
 The Estate of C. M. Haddad
 Mr. Frederick S. Hale
 Mrs. Agnes Hall
 Mr. and Mrs. David Hall
 Mr. and Mrs. Gerald M. Hall
 Mr. William W. Hamby
 Mr. Dennis Hamilton
 Mr. and Mrs. Lee D. Hamons
 Mr. and Mrs. Larry P. Hampton
 Ms. Patricia A. Hampton
 Ms. Margaret L. Hanson
 Mr. and Mrs. Claud W. Hardie
 Mr. and Mrs. John C. Hardy
 Mr. Steve Hardy
 Ms. Lynda Hargrove
 Mr. and Mrs. Robert S. Hargrove
 Mr. and Mrs. Larry F. Harrelson
 Mr. Marvin D. Harrison
 Harry's Building Materials, Inc.
 Mr. and Mrs. W. Scott Hart
 Mr. and Mrs. Dean Harvey
 Ms. Barbara J. Hassell
 Mr. and Mrs. Billy J. Hawkins
 Ms. Deborah R. Hawkins
 Mr. and Mrs. James A. Hawkins
 Mrs. Susan Z. Hawkins
 Ms. Dremma K. Haywood
 Ms. Gunhild E. Hedge
 Mr. Dwight A. Hedgpeth
 Mr. Louis Heimer
 Mr. Fred Heinrich
 Dr. and Mrs. Steven J. Helf
 Mr. Louis Henderson
 Ms. Virginia Hensarling
 Ms. Emma J. Henson
 Mrs. Brenda C. Herber
 Ms. Patricia L. Herring
 Mr. Jack L. Herrington
 The Molly Ann Hickman Estate

Mr. and Mrs. Ronald G. Hightower
 Mr. and Mrs. Johnny W. Hill
 Mrs. Louise N. Hill
 Dr. and Mrs. R. Stephen Hillis
 Mr. and Mrs. Mike G. Hines
 Dr. and Mrs. William R. Hobbs
 Mr. and Mrs. Darrell R. Holiday
 Ms. Betty L. Holitzke
 Dr. and Mrs. Jack D. Hollada, DC
 Mrs. Charlotte L. Holland
 Mr. and Mrs. Danny C. Hollis
 Mr. and Mrs. Robert L. Holsomback
 Mr. and Mrs. Edward G. Holt
 Dr. and Mrs. Rene Holt
 Mrs. Martha B. Hook
 Ms. Betty J. Horbelt
 Ms. Nancy Houston
 Mrs. Pamela K. Howard
 Mr. and Mrs. Lloyd F. Howerton
 Mr. and Mrs. Richard F. Hoyt
 Mr. James F. Hubbard
 Ms. Cathy Huddleston
 Mr. and Mrs. Joe D. Huffaker
 Mr. and Mrs. Craig T. Hughes
 Mr. and Mrs. Lester Hughes
 Ms. Linda K. Hughes
 Mrs. Martha G. Humphries
 Mrs. Lee A. Hyde
 Mr. Edgar D. Iltschner, Jr.
 Mr. Gale F. Ingalls Jr.
 Mr. Aubrey D. Ingram
 Mrs. Nancy Ireland
 Mr. and Mrs. Alan R. Jackson
 Ms. Clemestine Jackson
 Ms. Patsy James
 Ms. Faye L. Jarrett
 Dr. Sebetha Jenkins-Booker
 Mr. and Mrs. Tony Jennings
 Mr. Tommy R. Jerger
 Mr. Albert R. Johnson, Jr.
 Mr. and Mrs. Doyle W. Johnson
 Ms. Jackie G. Johnson
 Mr. and Mrs. James W. Johnson
 Ms. Jeweline Johnson
 Mr. John Johnson
 Mr. and Mrs. Johnnie Johnson
 Mr. Jonathon Johnson
 Mr. Robert K. Johnson
 Mr. and Mrs. Robert T. Johnson
 Ms. Sarah V. Johnson
 Ms. Mary N. Johnston
 Mrs. Linda K. Jones
 Ms. Lisa R. Jones
 Mr. Robert D. Jones
 Mr. Robert G. Jones
 Mr. and Mrs. Thomas E. Jones
 Mrs. Jean A. Jordan
 Ms. Sandra S. Jordan
 Mr. and Mrs. William C. Kainer
 Ms. Keryl J. Kalb
 Ms. Pebble L. Kaup
 Mr. and Mrs. Jack Kempenaar
 Ms. Burnell Kennedy
 Ms. Marie I. Kennedy
 Mr. and Mrs. Bob Kennimer
 Mr. and Mrs. James D. Kennington
 Ms. Jacqueline K. Kerlin
 Mr. Roger D. Key
 Ms. Reann Kiang
 Ms. Sue R. Kidd
 Mr. Robert G. Kiermaier
 Ms. Shirley Kight
 Mrs. Alma Kindle
 Mr. and Mrs. Forrest L. King III
 Ms. Cynthia K. Kirby

Dr. and Mrs. Andrew K. Kirkpatrick
 Mr. and Mrs. Hugh E. Kirksey
 Mr. and Mrs. Melvin N. Kivett
 Mr. and Mrs. George W. Klein
 Ms. Mary Kolac
 Mr. and Mrs. Richard A. Kraft
 Mr. and Mrs. Paul Krutza
 Mrs. Margherita M. Lahue
 Mr. Aliva B. Land
 Ms. Eleanor Landrum
 Mr. and Mrs. Tony Lane
 Mr. and Mrs. Billy J. Langley
 Mrs. Royce L. Lanier
 Dr. John L. LaNoue
 Mr. and Mrs. Kaz Laszlo
 Dr. and Mrs. Paul N. Latta
 Mr. and Mrs. Harry L. Leatherwood
 Ms. Margarette S. Ledford
 Ms. Charlsye J. Lee
 Ms. Geraldine Lee
 Mrs. Nelwyn Lee
 Dr. and Mrs. Tsauyu Lin
 Mr. Dwight Lindop
 Mr. Marvin L. Lister
 Mr. and Mrs. Terry L. Livingston
 Mr. and Mrs. Barry D. Lofquist
 Mr. David Loper
 Mr. Joe Lopez
 Mr. and Mrs. William M. Love
 Ms. Hazel Lovelace
 Mr. and Mrs. Harold R. Lowe
 Ms. Julia Lowrance
 Ms. Carol A. Lucas
 Mr. and Mrs. Duane Lunday
 Mr. Ronney G. Lusk
 Mr. and Mrs. Larry B. Lykins
 Mr. and Mrs. Jerry D. Mabry
 Mr. Andrew Macias
 Ms. Sarah J. Macpherson
 Mr. James L. Madison
 Malcolm Reed Ventures LP
 Mr. James L. Mallory
 Ms. Beverly S. Mamey
 Mr. John T. Mann
 Ms. Nan Mann
 Ms. Melissa J. Manning
 Mr. Robert Marchell
 Ms. Consuelo M. Martinez
 Ms. Deborah K. Marshall
 Mrs. Malinda G. Marshall
 Mr. and Mrs. Anthony M. Martin
 Mr. John M. Martin
 Mr. and Mrs. Reid Martin
 Ms. Ruth Martin
 Ms. Sharon M. Martin
 Mr. Tommie Martin
 Martin Walker, PC
 Mr. Ralph Martinez
 Mr. Thomas Matthews
 Ms. Bobbie N. Maxey
 Mr. and Mrs. James J. Mazzu
 Mr. Gerald G. McAnally
 Mr. and Mrs. Brian K. McCabe
 Ms. Patricia A. McCammon
 Ms. Doris A. McClanahan
 Ms. Loretta K. McCleary
 Ms. Magdalina McClung
 Mr. and Mrs. John A. McComic
 Mrs. Donna J. McCoy
 Mr. Stephen L. McDonald
 Mr. and Mrs. Joe McElroy
 Ms. Bobbie E. McFadden
 Mrs. Mary McGee
 Mr. Michael B. McGinney
 Mr. Danny L. McKethan

Mr. and Mrs. Bernard McKinney
 Mrs. Lindsay McKinney
 Mr. and Mrs. Roger McLaughlin
 Mrs. Shirley T. McMahan
 Mr. and Mrs. John T. McMakin
 Mr. and Mrs. David McMurray
 Mr. and Mrs. Jim McPeek
 Drs. Nicholas and Michelle Medel
 Ms. Melba J. Medford
 Mr. and Mrs. William D. Meeks
 Mr. and Mrs. Clarence C. Meiske
 Mr. and Mrs. Joseph A. Mele
 Ms. Linda N. Merrill
 Ms. Berenda A. Mewborn
 Mr. and Mrs. Alton Migl
 Ms. Julie A. Miller
 Ms. Kaye F. Miller
 Mr. Clyde M. Mills
 Mr. and Mrs. Samuel E. Mink
 Ms. Debra E. Minnick
 Mr. and Mrs. James S. Mitchell
 Mr. Jerry Mitchell
 Mr. and Mrs. Albert Moellenbeck
 Ms. Mary Monkress
 Mr. Billy L. Montgomery
 Ms. Gay H. Moon
 Mr. Perry D. Moon
 Ms. Billie M. Moore
 Mr. and Mrs. Wayne L. Moore
 Mr. Adam R. Moreau
 Ms. Brenda B. Morgan
 Mr. Jean A. Morgan
 Mr. Willard L. Morgan Jr.
 Ms. Christina M. Morris
 Mr. Sid Morris
 Ms. Thelma B. Moseley
 Mr. Walter F. Moseley
 Mr. and Mrs. Billy E. Mullican
 Mr. A. C. Musgrave
 Mr. and Mrs. John A. Musselman
 Ms. Rebecca M. Myer
 Mr. John P. Myers
 Mr. and Mrs. Frank D. Myrick
 Mr. and Mrs. Andy Navarro
 Mr. and Mrs. Fernando Navarro
 Mr. and Mrs. Gilbert G. Navarro
 Mr. Jasper T. Neal
 Mr. and Mrs. Randy Neal
 Mr. and Mrs. Robert M. Neff
 Mrs. Gloria Nelson
 Mr. Wayne R. Nelson
 Mr. Eddie M. Nesser
 Ms. Love M. Neukom
 Ms. Yuleta N. Newman
 Mr. and Mrs. William W. Newton
 Ms. Hoa Nguyen
 Ms. Linda M. Nichols
 Mr. Joseph A. Nolen Jr.
 Mr. and Mrs. Melvin R. Nutt
 Dr. Chiagozie U. Nwasuruba
 Mr. and Mrs. Ronald R. Oakes
 Dr. and Mrs. P. Daniel Obesso
 Mr. Ronnie E. Odom
 Mr. and Mrs. Ted Odom
 Dr. Laura and Mr. Kevin O'Halloran
 Ms. Deborah N. Oldham
 Mr. Wayne D. Ortloff
 Reverend and Mrs. Donald F. Osada
 Mr. and Mrs. Louis J. Osburn
 The Louis and Peaches Owen Family
 Foundation
 Mr. Roy D. Owens
 Mr. Charles N. Pappas
 Mr. and Mrs. Billy Bob Parker
 Ms. Catherine Parker

Mr. and Mrs. Jimmy Parker
Ms. Martha A. Parker
Ms. Rhonda Parker
Mr. and Mrs. Terry L. Parsons
Mr. Richard A. Patneau
Ms. Annetta W. Payne
Ms. Barbara J. Payne
Mr. and Mrs. Kyle D. Payne
Mr. and Mrs. Gerald B. Peddy
Mr. Donald G. Pence
Ms. Barbara Penner
Ms. Betty Perkins
Mr. David M. Perkins
Ms. Patsy Perry
Ms. Verna L. Perry
Mr. Kenneth A. Petro
Mr. and Mrs. John L. Pettigrew
Ms. Bonnie P. Petty
Ms. Myra Petty
Mr. and Mrs. Robert S. Peveto, Jr.
Mr. Michael Phoenix
Ms. Georgia S. Pierce
Mr. and Mrs. C. W. Pilgrim
Mr. and Mrs. Richard A. Pinto
Dr. and Mrs. Peter Pitonak
Dr. and Mrs. Paul W. Pitts
Mr. Robert E. Plummer
Dr. and Mrs. Hugh R. Poindexter
Mr. and Mrs. J. Rogers Pope, Jr.
Mr. and Mrs. Danny R. Potter
Mr. J. Presley
Ms. Joyce M. Price
Mr. and Mrs. Jason J. Proctor
Prosperity Bank
Mr. and Mrs. Bill Pulliam
Ms. Jannine A. Purcell, NP
Mr. James R. Quattlebaum
Mr. Alan Quinn
Mr. and Mrs. David Quinn
Ms. Rosa Ramirez
Ms. Sharon A. Ramsey
Mr. and Mrs. Venu Rao
Mr. Larry P. Ratcliff
Mr. and Mrs. Thomas L. Ratliff
Mr. and Mrs. Clarence T. Rattan
Mr. Satish Rawal
Mr. Charles Ray
Mr. and Mrs. Louis I. Ray
Mr. Robert S. Ray, Jr.
Mr. Robert W. Ray
Mr. and Mrs. Clifford L. Raymond
Mr. Zackey W. Raymond
Mr. Bartley S. Reddoch
Mr. and Mrs. Richard R. Redman
Mr. Pat Reed
Mr. and Mrs. Pete Reese
Mr. and Mrs. Robert Rekieta
Mr. Richard V. Reppert
Mr. and Mrs. Randy Reynolds
Ms. A. Lee Rhodes
Ms. Bobbie J. Rice
Mr. and Mrs. Ralph R. Richason
Mr. Jerry E. Richbourg
Mr. and Mrs. George Richie
Mr. Bruce A. Richter
Ms. Nancy A. Ringo
Mr. and Mrs. Michael G. Robards
Mr. and Mrs. Marshall E. Roberts
Ms. Emily M. Robertson
Mrs. Linda M. Robertson
Mr. Travis Robertson
Mrs. Dorothy M. Robinson
Ms. Linda C. Robinson
Ms. Rebecca J. Robinson
Mr. Daniel L. Rodell

Mr. and Mrs. Frank Rodriguez
Mr. Frank G. Rodriguez
Ms. Juana Rodriguez
Ms. Joan F. Rogers
Mr. and Mrs. Lowell Rogers
Ms. Mary Rogers
Mr. Phil S. Rogers
Mr. Glenn Ross
Mr. Robert P. Rouen
Ms. Dorothy N. Rountree
Dr. and Mrs. Mike Rowan, Jr.
Mr. and Mrs. Mike Rowan
Mrs. Linda K. Rowe
Ms. Cindy B. Rudd
Ms. Linda Rudd
 and Mr. Steve P. Hellmuth
Mr. and Mrs. D. Kyle Rutherford
Mr. Ricky C. Rutherford
Mrs. Sheila Sadler
Mr. and Mrs. Daniel C. Saleh
Ms. Jesusa Y. Saleh
Mr. and Mrs. Shawn Salter
Ms. Dona M. Samsel
Ms. Valerie J. Sanders
Ms. Marsha Sasser
Mr. and Mrs. Allen F. Schmidt
Mr. C. W. Schneider
Ms. Cynthia J. Schorr
Mr. Kurt W. Schulz
Ms. Donna Scott
Mr. Owen D. Scott
Mr. Ray D. Scott
Mr. Richard V. Scott
Ms. Roberta Seeton
Ms. Dora L. Session
Ms. Judith A. Sessions
Ms. Jeanette Sexton
Mr. Retus B. Shelton
Mr. James A. Sheridan
Mr. Lloyd A. Shinn
Mr. James L. Shock
Mr. Roger Shock
Mr. Jack G. Short and Dr. Hope K. Short
Ms. Wanda W. Shumate
Mr. Marcel R. Simmons
Ms. Sonja M. Simmons
Mr. Stephen L. Simmons
Ms. Ruthie Simon
Mr. and Mrs. Rusty C. Sims
Mrs. Laurie Small
Ms. Almarie C. Smith
Ms. Angela R. Smith
Mr. Dane Smith
Ms. Joy E. Smith
Mr. and Mrs. Mackey R. Smith
Ms. Mary L. Smith
Ms. Pauline L. Smith
Mr. Ronald G. Smith
Ms. Ruth Ann Smith
Ms. Sally A. Smith
Mr. Willie T. Smith
Mr. and Mrs. Barry J. Sossamon
Southside Bank
Mr. and Mrs. Jackie Spencer
Mr. Perry Spence
Mrs. Rebecca Spencer
Ms. Vera Spier
Ms. Deborah L. Stafford
Mr. Jimmy L. Stafford
Mr. and Mrs. Robert L. Stafford
Mr. and Mrs. Allen Staggers, Jr.
Ms. Judy C. Stallcup
Ms. Bettye L. Stallings
Ms. Joyce E. Stanley
Mr. and Mrs. Charles L. Starks

Ms. Carolyn W. Starling
State Farm Companies Foundation
Mr. Gerson H. Stearns
 and Mrs. Helen H. Smith
Ms. Annette F. Stedry
Mr. Charles R. Steeno
Mrs. Susan Rae Stefanek
Mrs. Judy M. Steger
Mr. and Mrs. Jay A. Stenklyft
Dr. Marvin G. Stephens, Jr.
Mr. and Mrs. Sven L. Sterner
Mr. John L. Steveson
Ms. Leonella S. Stine
Ms. Fayrene Stokes
Mrs. Mollie Stokley
Ms. Ann S. Stone
Ms. Reba N. Stone
Mr. and Mrs. Roger S. Strain
Ms. Linda Strong
Mr. and Mrs. Robert J. Strong
Mr. and Mrs. Robert W. Stutes
Mrs. Lorraine M. Sullivan
Mr. Douglas Sumrall
Ms. Carol Swenson
Mr. Roger G. Swinney
T.L.L. Temple Foundation
Ms. Geri Taber
Mr. and Mrs. Paul Taft
Ms. Claudia Tamayo
Mr. and Mrs. Monty J. Tarbutton
Ms. Dorothy B. Tarver
Mr. and Mrs. John C. Tate
Mr. and Mrs. Charles J. Taylor
Ms. Fayetta M. Taylor
Mr. Frederick Taylor
Ms. Linda Taylor
Mr. and Mrs. Ronnie D. Taylor
Mr. Malcolm Teasdale
Dr. Zehra Tekin
Texas Bank and Trust
Ms. Whitney Tharpe
Mr. and Mrs. Don G. Thode
Mr. and Mrs. Alan L. Thomas
Mrs. Joan A. Thomas
Mrs. Marilyn M. Thompson
Mr. and Mrs. Robert P. Thomas
Mr. and Mrs. Robert C. Thompson
Mr. and Mrs. Jerry Thornton
Mr. Glen H. Thornton
Mr. Todd W. Threlkeld
Ms. Mary Tidwell
Mr. and Mrs. F. Joe Tincher
Dr. and Mrs. Herschel W. Tipton
Mrs. Donna T. Toler
Mr. and Mrs. Harry R. Tosh
Trane Technologies
Mr. and Mrs. Michael G. Treadway
Mr. and Mrs. Jim Truitt
Mr. Preston J. Tucker
Mr. and Mrs. Paul Tugwell
Mr. and Mrs. Alex C. Turner
Mr. and Mrs. Gerald Turner
Dr. Ralph J. Turner
Mr. Stephen Turner
Mr. William Turppa
Ms. Madeline L. Unruh
Mr. and Mrs. Ronald VandenBerg
Ltc. Otto R. Vanderstay (Ret)
Mr. Robert R. Viana
Mr. and Mrs. Michael Victor
Mr. Marshall R. Virgil
The Voss Family Fund
Ms. Annette Wagener
Ms. Preeni Walgama
Mr. Charles T. Walker

Ms. Ester Walker
Mr. and Mrs. Johnny Walker
Mr. and Mrs. Thomas K. Walker
Ms. Marion A. Walkner
Mr. Douglas Wallace Jr.
Ms. Jo Ellan Walley
Mr. and Mrs. Grant Wallin
Walmart
Mr. and Mrs. Kevin W. Walsh
Ms. Linda Walsh
Ms. Joetta M. Waltemathe
Mr. and Mrs. John Wampler
Dr. and Mrs. Frank T. Ward
Ms. Anita J. Warren
Mr. James E. Warren
Mr. Maurice Warren
Mr. and Mrs. Chris Watkins
Ms. Julia Watkins
Ms. Betty Watson
Ms. Vicki K. Watson
Mr. Havard W. Weatherton
Dr. Susan P. Weaver
Mr. and Mrs. Rodney R. Wedel
Mr. and Mrs. David L. Weitzman
Mr. and Mrs. Stephen O. Welch
Mr. and Mrs. James Welchly
Mr. Amanuel Welderafael
Mr. J. D. Weldon
Mr. and Mrs. Robert B. Wells
Mr. and Mrs. Tim P. West
Ms. Lou S. Westhoff
Mr. and Mrs. Gregory C. Weston
Mr. Michael W. Wheeler
Mr. Jerry D. White
Mr. Lawrence L. White
Mr. Jimmy E. Whitehead
Mr. and Mrs. Gary W. Whitlow
Ms. Judy N. Whitton
Mr. and Mrs. Gary Wideman
Mr. William R. Wiggins
Mr. and Mrs. Mike Wilcox
Mr. Jerry W. Wilder
Mr. Charles Wilkerson
Ms. Ellen R. Williams
Mr. and Mrs. John P. Williams
Dr. and Mrs. Richard K. Willms
Mrs. Judy S. Wilmeth
Mr. David G. Wilson
Mrs. Flora J. Wilson
Mr. Francis C. Wilson
Mr. and Mrs. Joe Wilson
Mr. Ronald E. Wilson
Ms. Barbara J. Winans
Watson W. Wise Foundation
Mrs. Janice L. Wisner
Dr. and Mrs. Douglas A. Witte
Mr. and Mrs. Chris Woldert II
Ms. Colleen D. Woodcock
Ms. Connie S. Woodmansee
Ms. Mary Turney Woolery
Ms. Betty J. Wright
Mr. and Mrs. Jerry R. Wright
Ms. Margaret L. Wright
Mr. Nelson Wright
Mrs. Rosie E. Wright
Mr. and Mrs. John D. Yates
Mrs. Kay N. Yates
Mr. and Mrs. Thomas E. Yeager
Mr. Henderson D. Young
Ms. Dorcie Youngblood
Mr. Woodrow Zajicek
Mr. Robert W. Zehren
Ms. Katherine Zymbroy





Caroline and Natalie Adair

Ms. Amanda D. Adair

Collin Alexander

Mr. and Mrs. Dan Mischnick

Lawrence Barat

Barat Firm PC

Blake Barney

Ms. Marsha Goldfine

Mr. and Mrs. Rich Holmes

Ms. Ann Pearce

Lindsey Bradley

Mr. Don L. Arnwine

Liz Brooks

Mr. and Mrs. Joel Hackney

Julie and Tom Brown

Mr. and Mrs. Ronald M. Arnett

Mr. and Mrs. Bill Evans

Mrs. Sam Garrett

Dr. and Mrs. Mike Giesler

Dr. and Mrs. Kevin D. Green

Dr. Jennifer and Mr. John Hardy

Mr. Hunter Kay

Mrs. Barbara D. Love

Mr. and Mrs. Don Russell

Mr. and Mrs. John Salisbury

Mrs. Penny Stephens

Tejas Missions, Inc.

Mr. and Mrs. Harry Wallace

Mr. and Mrs. Bernard H. Ward, Jr.

Mr. and Mrs. Robert E. Young Jr.

Mrs. Kathryn L. Butts

Mr. Nathan Cash

Mr. and Mrs. Jason Moore

Kathryn and Reagan Butts

Mrs. Barbara D. Love

Eleanor G. and William D. Butts

Mr. and Mrs. B. Garnett Brookshire

Korzeniewski Family Foundation

Mr. and Mrs. Richard B. Patteson

Mr. and Mrs. Ron Thomas

Mrs. Charlotte Wilson

William D. Butts

Mr. and Mrs. Billy C. Foote

Mr. and Mrs. Neal P. Laird

Mr. and Mrs. Robert S. Peveto, Jr.

Mr. and Mrs. Robert Tompkins

The Butts Family

Mr. and Mrs. Clark Butts

Dr. and Mrs. Mike Giesler

Dr. and Mrs. Kevin D. Green

Ms. Judy Hollers

Mr. Hunter Kay

Mr. and Mrs. Bernard H. Ward, Jr.

Bailyn and Bentley C. Byrd

Sandra K. Hollis

CHRISTUS Birthplace

and NICU Associates

Mr. and Mrs. R. Ryan Pettit

CHRISTUS Mother

Frances Foundation Board

Mr. Steve Hellmuth

Bennett J. Davis

Mr. and Mrs. B. Frank Davis, Jr.

Jackson T. Dougherty

Mr. and Mrs. Thomas K. Dougherty

Rosalind Dowdell

Dowdell Consulting LLC

Dr. Grace C. English

Ms. Cindi Christopher

Ericka Sanchez, RN

Ms. Susan Izard

Mary Lauren Faulkner

Mrs. Adele Regan

Peggy Foster

Mr. and Mrs. Joel Hackney

Mary Blake Goodgion

Mr. and Mrs. Brad Newberry

Braxton Green

Mr. and Mrs. Craig Murphy

Nez and Mike Gross

Mr. and Mrs. Bruce C. Faulkner

Daniela and Luca Guzzetta

Mr. and Mrs. Joseph Guzzetta, Sr.

Juanita Hackney

Mr. and Mrs. Joel Hackney

Verna and George Hall

Mr. and Mrs. Bruce C. Faulkner

Claire Hardy

Mr. and Mrs. John Estes

Hannah P. Harlow

Procure c/o Snowflake Rosen

Tucker P. Hightower

Mr. and Mrs. Wes Hightower

Dr. Julia D. Hwang

Mr. and Mrs. Bob Waldrop

Anna Rose Kent

Mr. and Mrs. Ray W. Kent

Dr. Fawad Khaliq

Ms. Cindi Christopher

Cecilia and Eliza Loggins

Mr. and Mrs. C. Clay McCain

Bert Lowe

Mr. and Mrs. H. John Blake

Janey Lowe

Holly Carroll

Dr. Ming Lu

Mr. and Mrs. Mike G. Hines

Mr. and Mrs. Roger McLaughlin

Sister Malgorzata Majszyzyk

Mrs. Eva Blight

Mr. and Mrs. Bruce C. Faulkner

Dr. Tiffany and Mr. Chad Taylor

Mrs. Marilyn M. Thompson

Carol and Jim Mazzu

Mr. and Mrs. Bruce C. Faulkner

Tommy McCain

Mr. and Mrs. C. Clay McCain

Karsyn and Paisley McMichael

Mr. and Mrs. Eric Sivertson

Mr. Joshua Morawski

Mr. and Mrs. Theodore Morawski

Dr. Brenda H. Morris

Mrs. Eva Blight

Dr. Tiffany and Mr. Chad Taylor

Bryson and Jackson Morrison

Mr. and Mrs. Michael P. Morrison

NICU Nurses and Staff

Mr. and Mrs. J. Christopher Glenney

Mr. and Mrs. Bryan Neal

Our Grandchildren

Dr. and Mrs. Ronald F. Dodson

Mrs. Paula M. Hawkins

Ms. Berenda A. Mewborn

Mr. and Mrs. Roger Smith

Micah Read

Ms. Jacqueline M. Read

Riley C. and Whitman Robbins

Mr. and Mrs. Robert S. Davis Jr.

Dr. and Mrs. Gregory A. Schultz

The Robbins Family

Mr. and Mrs. Clark Hampe

Cindy Romines

Ms. Jenny Romines

Callie, Claire and Seth Rowan

Mr. and Mrs. Mike Rowan

Dr. Don and Betty A. Smith

Mr. and Mrs. Bruce C. Faulkner

Teresa Tavera

Ms. Yazirir Y. Orrostieta

Brooke and Riley B. Tosh

Mr. and Mrs. Billy J. Langley

Rocky Turman

Mr. and Mrs. A. W. Stafford

Natalie and Morgan Wade

Mr. and Mrs. John C. Cumming

Laura and Ken Waits

Mr. and Mrs. Bruce C. Faulkner

Dr. Ellen S. Walraven

Ms. Cindi Christopher

The Honorable and Mrs. Don Warren

Mr. and Mrs. Bruce C. Faulkner

Carrie and Sam Wolf

Mr. and Mrs. Bruce C. Faulkner

Dolly and Stephen Wolf

Mr. and Mrs. Bruce C. Faulkner

Sharon and James Wynne

Mr. and Mrs. Bruce C. Faulkner





James E. Abell
Mrs. Deborah A. Mahler

Frankie Alexander
Mr. and Mrs. Jim Alexander

Dr. J. W. Allen
Mrs. Susan Rae Stefanek

J. P. Benedict
Mrs. Brenda Benedict

Boe Broughton
Mr. and Mrs. Danny R. Potter

R. Jack Bryans
Ms. Sandra M. Bridges

Frank Budde
Mr. and Mrs. Bruce C. Faulkner

Don Bullock
Mrs. Elizabeth F. Sutton

James W. Campbell
Mr. and Mrs. Kevin Basham

Ken Canten
Mr. and Mrs. Monty Stanley

Christopher Chase
Mr. and Mrs. Darrell Chase

Lesley P. Clanton
Ms. Betty Haisten

Josephine M. Couser-Fulton
Mr. Charles C. Couser

Julia Cruz
Mr. and Mrs. Juan Cruz

Connor Blake Curts
Mr. and Mrs. Danny D. Curts
Dee's Paint and Body, Inc.

Buzz Custer
Mr. and Mrs. Billy Bob Parker

Walter Paige Eiland
Mr. and Mrs. Clay Eiland

Mollie Eltife
Mr. and Mrs. Juan Cruz
Mr. and Mrs. Bruce C. Faulkner

Brandi L. Farris
Mrs. Alice B. Farris

Leslie Janiece A. Fenton
Mr. and Mrs. Matthew C. Murray

Colin James Field
Ms. Meagan Field

Kenneth Garris
Mrs. Kristy M. Garris

Matasha Goebel
Ms. Judy Goebel

Deana Goodwin
Mr. Guy Goodwin

Whitney Gullett
Mr. Robert M. Gee

Bailey C. Gully
Dr. and Mrs. Kyle L. Gully

Georgieanna Harris
Mr. Richard G. Harris

Jason L. Hightower
Ms. Samantha B. Comeaux
Mr. and Mrs. Tony Gilbreath
Mr. and Mrs. Donald C. Hightower
Mr. and Mrs. Dan Mischnick
Mr. and Mrs. Tommy L. Pope
Mr. and Mrs. John T. Wright

V. Everette Hooten
Mrs. Sandra Hooten

Brenda K. Iltschner
Mr. Edgar D. Iltschner, Jr.

Hazel and Louise Jackson
Anonymous

Arthur S. Judge
Ms. Shelley A. Judge

Verna Koonce
Mr. and Mrs. Ben F. Koonce

Thelma and Horace Ray Lewis
Mr. and Mrs. Donald C. Hightower

Barbara Lynas
Ms. Karen Engelkens

Woody Mann
Mr. John T. Mann

Michael McClean
Al & Peggy Dematteis
Family Foundation

Angela M. Morgan
Mr. and Mrs. Thomas G. Morgan

Leta Nation
Mr. and Mrs. William M. Love

Hubert Nutt
Mr. and Mrs. Melvin R. Nutt

Patsy G. O'Barr
Mr. Billy J. O'Barr

Jo D. Parker
Mr. and Mrs. Billy Bob Parker

Juliann Payne
Ms. Valerie A. Payne

Rose C. Pitts
Mrs. Jannese K. Pitts

Christopher Pope
Mr. and Mrs. David B. Bulter

John Regan
Mr. and Mrs. Bruce C. Faulkner

William P. Richardson
Mrs. Lucille O. Richardson

Tommy and Lena Romero
Ms. Geri Taber

Elizabeth L. Rowan
Mr. David H. Nordyke
Dr. and Mrs. Mike Rowan, Jr.

Polly Rowan
Mr. and Mrs. Bruce C. Faulkner

Ronnie Schoenbrun
Mr. and Mrs. Bruce C. Faulkner

Eloise Shock
Mr. James L. Shock

Jon Simmons
Mrs. Carol B. Mazzu

Matthew Skeen
The Honorable and Mrs. Jack Skeen, Jr.

William A. Stanley
Ms. Joyce E. Stanley

Dorothy J. Stinson-Curtis
Mr. and Mrs. Roderick Redwine

Mary Dale and Patrick R. Thomas, M.D.
Dr. Steven J. Cohen
and Mrs. Marjorie A. Ream

Pete Thompson
Mrs. Marilyn M. Thompson

Sabrina Walker
Mr. and Mrs. Kenneth W. Cannon

Randy Ward
Mrs. Mary L. Ward

Yvonne and Richard Ward
Mrs. Jannese K. Pitts

Dorothy Lucille "Lucy". Weissmann
Mr. and Mrs. Robert G. Myers
Dr. and Mrs. Eric Weissmann
Dr. and Mrs. Robert C. Weissmann Jr.
Mr. and Mrs. Robert C. Weissmann III

Grant Lee Williams
Clay's Lawn & Fence

Leah N. Zucca
Mr. and Mrs. Jim Zucca





Ms. Karen A. Adams
 Ms. Kyna Adams
 Mr. and Mrs. Omer I. Adams
 Ms. Jameshia Adkins
 Mr. Terry Adney
 Very Reverend
 and Mrs. M. L. Agnew, Jr.
 Agroplus Operating, LP
 Ms. Melissa Alanis
 Ms. Brenda Alcantar
 Ms. Hayley Aldana
 Ms. Christina Aldridge
 Ms. Lisa Allen
 Ms. Pamela S. Allen
 Vee Allsbrooks
 Allstate Insurance
 Ms. Jennifer Alpha
 Anah Altamirano Beltran
 Altra FCU
 Ms. Pamela Alvarez
 Ms. Ashli Ambeaux
 American Income Insurance Company
 Ameriprise Certificate Company
 Ms. Amanda Anderson
 Ms. Angela L. Anderson
 Ms. Haley Anderson
 Ms. Kinlie M. Anderson
 Ms. Sharunda D. Anderson
 Mr. and Mrs. Todd R. Anderson
 Ms. Victoria Anderson
 Ms. Jacqueline Andrade
 Mr. Kasey J. Andreason
 Anonymous
 Ms. Jo N. Appleton
 Ms. Sharon Archuleta
 Ms. Hilda Arellano
 Ms. Cinthia Arredondo
 Ms. Rosa L. Arroyo
 Ms. Jaime Ashburn
 Ms. Jessica Atkinson
 Atlas Credit Company
 Saylor Attaway
 Ms. Tina Atwood
 Mrs. Elizabeth J. Ausburn
 Austin Bank
 Ms. Trisha Avis
 Ms. Bonnie S. Avonrude
 Mr. Armando Ayala
 Ms. Misty L. Baggett, FNP
 Bailey's Ace Hardware #6588
 Ms. Krista Bain
 Ms. Amber Baker
 Ms. Anna Baker
 Mr. and Mrs. Shannon D. Baker
 Ms. Violet L. Baker
 Ms. Haley Ball
 Ms. Katlyn Ball
 Ms. Terry B. Ball
 Ms. Kristyn Ballard
 Ms. Maria Banuelos
 Barat Firm PC
 Ms. Sofia R. Barbosa
 Ms. Erin Barchak
 Ms. Cristy Bardin
 Mrs. Belinda Barker
 Ms. Alisha C. Barron-Clark
 Ms. Robin Bartlett
 Ms. Cynthia Bass
 Mr. and Mrs. Johnny M. Bass, Jr.
 Mr. and Mrs. Terry G. Bates

Ms. Markya Battee
 Ms. Shaniqua Battee
 Mr. and Mrs. Brad Bays
 Ms. Kristen E. Beddingfield
 Ms. Camillia Bell
 Bella Baby Photography
 Mr. and Mrs. Kevin M. Belongie
 Dr. and Mrs. Joe Bill Belue
 Benevity Community Impact Fund
 Ms. Deshante Benton
 Mr. and Mrs. Robert N. Bergfeld, Sr.
 Bernard Foundation
 Ms. Tiffany Bernhart
 Ms. Libby E. Berry and Mr. Scott Reed
 Mr. and Mrs. Bret Berry
 Ms. Courtney Bersano
 Ms. Tiasha Beverly
 Ms. Cynthia A. Bewley
 Ms. Katy Bezner
 Ms. Michaela Bielitz
 Ms. Micha Biggar
 Mr. and Mrs. John Bill
 Ms. Caroline Billingsley
 Ms. Korye Birdsong
 Ms. Arianna Bishop
 Mrs. Deanna E. Bishop
 Mrs. Martha R. Bitter
 Ms. Mary Bittner
 Mr. and Mrs. Randy R. Bjork
 Ms. Alyssa M. Black
 Ms. Linda E. Blakeman
 Ms. Virginia P. Blalock
 Ms. Samantha Bland
 Ms. Brianna Bloomer
 Ms. Kimberly D. Bobbitt
 Ms. Brenna Bodle
 Ms. Lorie Bonin
 Ms. Tierany N. Booker
 Ms. Korye Bookhamer
 Mrs. Beth Boothe
 Mr. John Bordas
 Ms. Paula Borens
 Ms. Melissa Borunda
 Bosworth & Associates
 Mrs. Diane C. Bottoms
 Mrs. Kimberly J. Bounds
 Ms. Ashlyn Bourgeois
 Ms. Christine Bouwer-Stinson
 Mr. and Mrs. James H. Bowers
 Ms. Jasmine Bowie
 Ms. Jackie V. Bowling
 Mr. and Mrs. Dennis E. Box
 Kacie Boykin
 Ms. Tracy Boyle
 Ms. Crystal Bozard
 Ms. Jacqueline E. Bozick
 Ms. Brenda Brabaw
 Mr. and Mrs. Eric Brabon
 Ms. Jessica Bradford
 Ms. Melissa D. Bradford
 Mr. and Mrs. Lindsey Bradley
 Ms. Mandy K. Bradshaw
 Ms. Amanda Brady
 Mr. Gaylan Braselton
 Ms. Ashleigh Brashear
 Ms. Samantha Brawner
 Mr. Charlie C. Brewer
 Mrs. Sonja L. Brewer
 Ms. Susan M. Brewer
 Mr. George M. Bridges

Ms. Angela D. Bright
 Ms. Michelle Brimage
 Mr. and Mrs. Kenneth D. Britton
 Mr. Robert L. Britton
 Ms. Elizabeth R. Brodeur
 Mr. and Mrs. Edward Brooks
 Ms. Carolyn Brooks
 Ms. Jodi L. Brooks
 Brookshire Grocery Company
 Mr. Bob Brousseau
 Mr. and Mrs. Floyd E. Brown
 Ms. Hailee Brown
 Mrs. Katie Brown
 Mr. and Mrs. Rick Brown
 Ms. Michelle L. Brown
 Ms. Regina Brown
 Ms. Rose K. Brown
 Ms. Shellwyn J. Brown
 Ms. Tammy Brown
 Ms. TaNasha Brown
 Ms. Natalie Bryant
 Ms. Marsha Buchheit
 Mr. and Mrs. J. Roe Buckley
 Mr. William Buhlig
 Ms. Christie M. Burge
 Mrs. Meredith W. Burke
 Ms. Jennifer M. Burleson
 Ms. Baylee Burns
 Ms. Martha H. Burns
 Ms. Kaleigh Burr
 Ms. Kaitlin Buschman
 Ms. Christen Bussell
 Mr. and Mrs. Kris Buth
 Mr. and Mrs. John L. Button
 Mr. and Mrs. Clark Butts
 Mr. and Mrs. Reagan L. Butts
 Ms. Beth S. Byrd
 Mr. Robert M. Byrd
 C & M Building Supply
 Mr. and Mrs. Joseph A. Cagianut
 Ms. Mary N. Cagle
 Ms. Amber N. Cain
 Ms. Paula Cain
 Ms. Blayne Caldwell
 Mr. Jerry L. Calender
 Ms. Betsy Calvillo
 Mr. and Mrs. Ramon Camacho
 Ms. Jill Campbell
 Mr. and Mrs. Kenneth W. Cannon
 Ms. Windy L. Cannon
 Mr. and Mrs. Joe Capps
 Ms. Erica Cargel
 Mr. Christopher D. Carlile
 Mrs. Marjorie Carlos
 Ms. Amanda Carmack
 Ms. Maria D. Carmona
 Ms. Brittany C. Carpenter
 Mr. Joe M. Carr
 Reverend and Mrs. John P. Carr
 Mr. Anthony E. Carrig
 Mr. and Mrs. Don E. Carroll
 Ms. Candance Carson
 Mr. and Mrs. Jay Carson
 Ms. Ashlee Carter
 Mr. and Mrs. James R. Carter, Sr.
 Ms. Mindy Carter
 Mrs. Florence B. Cary
 Mr. Nathan Cash
 Ms. Rachel Cash
 Ms. Caitlin Cashell

Ms. Sonia Castillo
 Ms. Cynthia Castle
 Ms. Shanda Castleberry
 Mrs. Laura Castro
 Mr. and Mrs. Robert E. Catalani
 Ms. Julie Caviness
 CC & P Enterprises, LLC
 CEFCO Convenience Stores
 Ms. Taylor Cerda
 Ms. Yahaira Cerda
 Ms. Laura Chadic
 Mrs. Mary U. Chadwick
 Ms. Gale Chalk
 Ms. Tiffany Chalk
 Ms. Crissy R. Chanslor
 Ms. Cindy Chapman
 Ms. Cynthia D. Chapman
 Ms. Amber N. Chauncey
 Ms. Iran Chavez
 Ms. Janelly Chavez
 Children's Miracle Network
 Ms. Jennifer Childress
 Mr. and Mrs. Randall V. Childress
 Ms. Amanda Chiles
 Mrs. Demetria Chivers
 Ms. Cynthia L. Christopher
 CHRISTUS Health
 CHRISTUS Trinity Mother Frances Health
 System Volunteers
 Ms. Jenni Chumley
 Mr. Frank L. Churchwell
 Ms. Yvette Cintron
 Ms. Delanee Clark
 Ms. Kelly R. Clark
 Ms. Lauren K. Clark
 Ms. Stephanie Clark
 Ms. Cassi Clarke
 Mrs. Nancy Van Fleet Claxton
 Ms. Jami V. Clayborne
 Ms. Maranda Cleary
 Ms. Shana Cleaveland
 Ms. Carli Cleveland
 Mrs. Courtney E. Clifton
 Ms. Paige Clifton
 Ms. Pam J. Clifton
 Ms. Lisa M. Cloud
 Mrs. Jerry K. Clyborne
 Ms. Maria Clymer
 Ms. Morgan Coats
 Ms. Kristy Coburn
 Coca-Cola
 Mr. Gary L. Cochran
 Mr. and Mrs. Joe D. Coe
 Ms. Calley Cole
 Ms. Leandria Colley
 Ms. Clara R. Collie
 Ms. Cassie Collins
 Ms. Jennifer K. Collins
 Mrs. Rita F. Collins
 Ms. Casey Collum
 Ms. Rachel M. Comte
 Ms. LeAnn Conner
 Ms. Raquel Conner
 Ms. Maricela Contreras
 Ms. Hannah Cook
 Ms. Patricia Cook
 Ms. Anne Cooper
 Ms. Christina Cooper
 Mrs. L. Anne Cooper
 Ms. Morgan Cooper





Ms. Shana Cooper
Ms. Kathy M. Cope
Ms. Shyanne Copeland
Ms. Ruby Cornelio
Ms. Desirai Corral
Ms. Cheli Corrin
Ms. Kelsie Costlow
Ms. Shannon Costlow
Mr. and Mrs. Craig Courson
Ms. Nicole Covington
Ms. Christen Cowan
Ms. Madeline Cowley
Ms. Anne Craft
Ms. Jamie Craver
Ms. Jennifer Crayton
Ms. Melissa R. Crim
Ms. Kylee Cross
Ms. Mary Cross
Mr. M. Chad Crow
Mr. and Mrs. Manuel Cruz
Ms. Julie A. Cude
Major and Mrs. William P. Culwell
Mr. and Mrs. Alan Cumming
Mr. Jonathan Cummins
Ms. Terra Cundieff
Mrs. Emma H. Curtis
Ms. Gena Dailey
Ms. Kimberly J. Dailey
Dairy Queen
Ms. Mindi Dancer
Ms. Britney Daniel
Ms. Sarah K. Daniel
Ms. Saida Darboe
Mr. and Mrs. Brad Bays
Ms. Chelsea Daugherty
Mr. James H. Davignon
Ms. Ashlie A. Davis
Ms. Chrissy Davis
Ms. Christina Davis
Mr. Edward D. Davis II
Ms. Ida P. Davis
Ms. Marlee Davis
Ms. Monaca Davis
Mrs. Rachel Davis
Mr. and Mrs. Ron Davis
Ms. Danielle Day
Mrs. Hollie De La Cruz
Ms. Malanie S. Dean
Ms. Stephanie Dean
Ms. Laurie Deel
Mr. and Mrs. Mike Deer
Ms. Dora P. Delapaz
Mr. and Mrs. Darrell W. Dement
Ms. Hannah Dement
Ms. Christy Denney
Ms. Shelby Denning
Mr. Harold R. Denson
Ms. Shadera Denton
Ms. Vironica Dewberry
Mrs. Kristy M. Dewbre
Ms. Angelicia G. Dews
Ms. Tiffany Diaz
Mrs. Ruth E. DiBacco
Diboll Ace Hardware
Mr. and Mrs. Clay Dickeson
Ms. Lisa Dickey
Ms. Adrianna Dinger
Ms. Misty Dion
Dr. and Mrs. Ronald F. Dodson
Mrs. Drema L. Domain

Ms. Kristina Domino
Ms. Joan Dorman
Ms. Mallory Dosser
Mr. and Mrs. Glen Dossett
Mrs. Barbara J. Dotson
Ms. Jerelaine L. Dotson
Ms. Lacey V. Dover
Ms. Lindsay N. Downing
Ms. Lisa M. Drennan
Mr. and Mrs. John R. Driver
Mr. William T. Drozd
Ms. Donna Dugger
Ms. Jennifer Dumas
Ms. Haley Duncan
Ms. Katelynn Duncan
Ms. Shelby Dunklin
Dr. and Mrs. Shawn Dunn
Ms. Tammi Dunn
Ms. Shannon Dunnavant
Ms. Shaquita L. Dunning
Mr. and Mrs. S. Ray Durham
Ms. Ashley Dutton
Ms. Rita Duvall
Leslie Dyson
Ms. Barbara J. Eads
Mr. and Mrs. John M. Eiche
Mr. and Mrs. Clay Eiland
Ms. Alexandria Elliott
Ms. Bobby Jo Elliott
Ms. Denise Elliott
Ms. Hollie Elliott
Dr. Andrea and Mr. Jason Ellis
Ms. Gloria W. Ellis
EMA Engineering & Consulting, Inc.
Ms. Karen Engelkens
Ms. Brandy Epperson
Ms. Rylee Erickson
Ms. Guadalupe Erskine
Ms. Lisa Erwin
Ms. Cayla Erwin
Ms. Tiffani Espinosa
Ms. Dulce Espinoza
Ms. Leisa L. Ethridge
Mr. and Mrs. Jared L. Evans
Ms. Sara Evans
Dr. and Mrs. Harold U. Everett, Jr.
Extra Life
Mrs. Ester J. Fain
Ms. Mallorie Farmer
Mrs. Vicky Farmer
Mrs. Alice B. Farris
Mr. and Mrs. Bruce C. Faulkner
Ms. Janna Fawver
Ms. Samantha A. Fay
Ms. Frankie O. Ferguson
Ms. Rayza Fernandez Martinez
Ms. Meagan Field
Ms. Dania K. Fields
Dr. Catherine M. Fieseler
Mrs. Annette S. Findley
First National Bank of Gilmer
Mr. and Mrs. Bobby D. Fitzgerald
Ms. Tara Fleet
Ms. Raina Flory
Mr. Steve Flory
Flower Connection LLC
Ms. Emily Flowers
Ms. Michelle Folsom
Ms. Brittany Ford
Dr. and Mrs. Ryan D. Ford

Ms. Trena Forgy
Ms. Ethel L. Fort
Ms. Robyn E. Fort
Ms. Holly Fortenberry
Ms. Misty K. Fortunas
Mr. and Mrs. Scott F. Fossey
Ms. Candice Fouse
Ms. Jennifer Fowler
Ms. Kim Fowler
Ms. Landry Fowler
Ms. McKenzie Fowler
Dr. and Mrs. Roger N. Fowler
Ms. Veronica C. Fox
Miss Beverly G. Francis
Ms. Holli Frank
Mr. and Mrs. Stan Frank
Ms. Cindy Frausto
Ms. Jorie Frazier
Mrs. Jamie M. Frederick
Mrs. Jennifer A. Freeman
Mr. and Mrs. Kenneth E. Fritcher
Ms. Allison Fritz
Ms. Jennifer W. Fritz
Ms. Meredith Frowick
Mr. Bradley Fuhrmann
Ms. Johnna K. Fullen
Ms. Carol Fuller
Ms. Rochelle Fuller
Ms. Cynthia A. Fulton
G & S Sales
Mr. and Mrs. Wilford V. Gabbard
Mr. Walter C. Gallaway
Ms. Carey Galofaro
Ms. Leah Galvan
Ms. Jethi Gama
GameStop
Ms. April Gammill
Ms. Rosa Garcia
Ms. Cindy Garcia
Mr. and Mrs. Gus Garcia
Ms. Idalia Garcia
Ms. Keesha Garcia
Ms. Marilu Garcia
Ms. Nelida Garcia
Ms. Jessica Garland
Ms. Robin L. Garland
Ms. Katelynn Garner
Mrs. Alisha M. Garrett
Ms. Morgan Garrett
Mrs. Sam Garrett
Ms. Angelica Garza
Mr. and Mrs. Jerry Gaskill
Mr. and Mrs. John T. Gaston
Mr. and Mrs. Dean C. Gatlin
Ms. Amanda Geisler
Ms. Ashley P. Gibbons
Ms. Madison Gibbons
Mr. and Mrs. Allen Gibson
Mr. and Mrs. Russell S. Gideon
Dr. and Mrs. Mike Giesler
Ms. Alicen Gilbert
Ms. Dana L. Gilbert
Ms. Savannah Gilbert
Mr. and Mrs. Terry Giles
Drs. Andrea Glaser and Seth Bellister
Ms. Kenda Glass
Glass Services, LLC
Mr. and Mrs. J. Christopher Glenney
Ms. Paula Godwin
Ms. Judy Goebel

Ms. Stephanie Goetz
Gold Coast Promotions/Retail Concepts
Ms. Marsha Goldfine
Ms. Shaela Golshani
Ms. Nely Gomez
Ms. Ruby M. Gomez
Ms. Kimberly Goode
Ms. Samantha Goode
Ms. Kailyn Goodman
Mr. and Mrs. Guy Goodwin
Mr. and Mrs. Rick Gordon
Mr. Thomas M. Gordon, Jr.
Ms. Amy Gore
Ms. Heather Gould
Ms. LaDawn Gour
Ms. Ashley Graham
Mr. and Mrs. Robert R. Graham
Mr. and Mrs. James S. Granberry
Grant & Flanery Law Firm
Ms. Hailey Granzin
Ms. Debra Graves
Ms. Cheryl L. Gray
Ms. Natasha Gray
Ms. Renee Gray, NNP-C
and Mr. John Murphy
Ms. Donna Grayson
Ms. Brittney N. Green
Ms. Courtney B. Green
Ms. Debra Green
Ms. Julie D. Green
Ms. Margie Green
Dr. and Mrs. Kevin D. Green
Ms. Sabrina Greenhouse
Ms. Laura R. Greenlee
Greenscape Services
Dr. and Mrs. Thomas F. Gregory
Mr. and Mrs. Steve Gregory
Mr. Shawn H. Griffin
Ms. Jerri D. Griffin-Smith
Ms. Whitney Griggs
Mrs. Brittany Grimm
Ms. Kaitlyn Grissom
Miss Miriam Gruenwald
Ms. Amanda Gruver
Ms. Tinnie Guidry
Ms. Rachael A. Gunstanson
Ms. Beatriz Gurrosetti
Ms. Whitney Guth
Mr. Felipe Gutierrez
Mr. and Mrs. Joel Hackney
Mr. John Haffner
Mr. and Mrs. Mark Hagan
Ms. Samantha Hagood
Ms. Heather Haimes
Ms. Angela M. Halfpenny
Ms. Abby Hall
Ms. Ashley Hall
Ms. Linda Hall
Ms. Vickie J. Hall
Ms. Barbara S. Hallonquist
Mr. and Mrs. R. Michael Hallum
Ms. Carla K. Hamer
Mr. and Mrs. Glen T. Hamilton
Mr. and Mrs. Raymond D. Hamilton
Mr. and Mrs. Hardy C. Hamm
Mr. and Mrs. Lee D. Hamons
Ms. Christina Hancock
Ms. Danielle Hanke
Ms. Candice Hankins
Ms. Stephanie T. Hankins





Ms. Patricia A. Hanna
Mr. and Mrs. D. Dean Hanson
Ms. Courtney Hardie
Ms. Peyton Hardie
Hardin Ace Hardware
Ms. Jiffy Hardin
Ms. Sharon Hardy
Mr. Ernesto Haros
Mr. and Mrs. Lance Harper
Ms. Valarie S. Harper
Dr. and Mrs. W. B. Harrell
Mr. and Mrs. Larry F. Harrelson
Ms. Laura Harrington
Ms. Dorothy L. Harris
Ms. Jackie Harris
Ms. Jennifer A. Harrison
Ms. Maria Hartnauer
Ms. Brandi L. Hassell
Ms. Rita Hastings
Ms. Wanda Hatcher
Hawkins Ace Hardware #17677
Ms. Clovis Hawkins
Mrs. Jennifer L. Hawkins
Ms. Amber Haynes
Mr. Dustin Head
Ms. Whitney L. Heddin
Mr. Dwight A. Hedgpeth
Mr. Steven Heff
Ms. Michelle Heins
Mrs. Teri Heller
Mr. Steve P. Hellmuth
and Ms. Linda Rudd
Ms. Erica Helm
Mr. David Helsley
Ms. Jennifer R. Hendricks
Ms. Barbara S. Hendrix
Mr. and Mrs. Dwain Henry
Ms. Megan Henson
Mr. J. H. Herlocker III
Ms. Maria Hernandez
Mrs. Eva L. Hernandez
Ms. Kristina Hernandez
Mr. and Mrs. James Hernholm
Ms. April L. Herschbach
HGR General Contractors L.P.
Ms. Kalah Hicks
Ms. Elizabeth Hill
Ms. Kimberly M. Hill
Ms. Toni Hill
Ms. Whitney Hill
Ms. Wanette Hilton
Ms. Destiny Hinojosa
Ms. Jennifer Hinojosa Ziedonis
Mr. and Mrs. Michael C. Hinson
Ms. Kacie Hitchcock
Mr. Jeffrey Ho
Dr. and Mrs. William R. Hobbs
Ms. Rebecca M. Hockett
Ms. Calynn Hodges
Dr. Terri L. Hoffman
Ms. Holly Hoffmann
Ms. Alexis Hogan
Mr. and Mrs. Michael R. Holbrook
Ms. Kourtney Holcomb
Ms. Ashton Holecek
Dr. and Mrs. Jack D. Hollada, DC
Mr. George T. Holland
Ms. Regina W. Hollie
Mr. and Mrs. David L. Holm

Ms. Brenda Holt
Ms. Carrie Holte
Mr. and Mrs. William Honeycutt
Mr. and Mrs. Greg Hood
Ms. Cindy Hooks
Ms. Erin M. Hoosier
Mr. and Mrs. V. Ed Hooten
Mr. and Mrs. Kenneth W. Hooton
Mrs. Pamela C. Hopkins, Ph.D.
Ms. Carley Hopson
Ms. Janquia Hopson
Ms. Alice M. Horne
Ms. Jessica Hornsby
Ms. Sydney N. Houser
Ms. Mary Kate Howard
Ms. Stephani Howard
Ms. Elizabeth Howe
Ms. Rebecca Howell
Ms. Robyn Howell
Mr. Edward Howerton
Mr. Lloyd F. Howerton
Ms. Charlene Hubbard
Ms. Laura K. Hubl
Ms. Robyn Huddle
Ms. Margaret D. Hudson
Ms. Mikayla B. Huff
Mrs. Amber D. Huggins
Ms. Danielle Hughes
Ms. Monica Hughes
Mr. and Mrs. William Hughey
Ms. Jennifer L. Hugo
Mr. and Mrs. James A. Hulick
Ms. Hannah Hunter
Ms. Kiara Hunter
Ms. Tammi Huntt
Ms. Michele Hurley
Ms. Susan Hurley
Ms. Anna M. Hyde
Ms. Shelly Hyles
Ms. Shelly A. Hyles
Ms. Guadalupe Ibarra
Ms. Joanna Ibarra
Ms. Manuela I. Ibarra
Ms. Maria Ibarra
IHOP Restaurants
Mr. Aubrey D. Ingram
Ms. Shirley J. Inselman
Ms. Norma S. Isais
Ms. Susan Izard
J & H Septic
Ms. Kiva S. Jackson
Mr. and Mrs. Alan R. Jackson
Ms. Paula J. Jackson
Ms. Samantha Jackson
Ms. Julie Jacobs
Ms. Alanna Jeffcoat
Ms. Amanda R. Jenkins
Ms. Alison Jennings
Mr. and Mrs. Eric D. Jensen
Dr. Gina and Mr. Jonathan Jetter
JOANN Stores #2372
Ms. Amy Joffrion
Ms. Tiffany Johnson
Ms. Amanda Johnson
Mr. and Mrs. Boyce A. Johnson
Ms. Courtney Johnson
Ms. Jackie Johnson
Ms. Jan H. Johnson
Mr. Matthew Johnson

Ms. Monique Johnson
Mr. Napier Johnson
Dr. and Mrs. Patrick E. Johnson
Ms. Susan Johnson
Ms. Tiffany Johnson
Ms. Valentina Johnson
Mr. Valentine Johnson
Mr. and Mrs. Dennis P. Johnson
Ms. Wanda F. Johnson
Ms. Dawn M. Johnston
Mr. and Mrs. Jeffrey Jon
Ms. Danielle Jones
Ms. Linda J. Jones
Ms. Magdaline S. Jones
Mr. and Mrs. Phil Jones
Mr. Robert G. Jones
Ms. Teresa Jones
Mr. Terry S. Jones
Ms. Myah Jones-Kutas
Ms. Callie Jordan
Ms. Geneviene Trevino Jordan
Ms. Jessica Joseph
Ms. Brittany Joslin
Mrs. Susan A. Joslin
Ms. Salina Juarez
Ms. Hope Justice
Mrs. Lynne A. Justice
Ms. Jennifer L. Justis
Ms. Judy Karm
Ms. Madison Kautzman
Dr. Carmen Keith
Ms. Courtney Kelley
Ms. Lindsay Kelley
Ms. Suzanne Kelley
Ms. Brandilyn S. Kelly
Kelly Community Federal Credit Union
Ms. Darla D. Kemp
Mrs. Neta Kemp
Ms. Madeline Kennedy
Ms. Shanada Kennedy
Ms. Jennifer Kenny
Dr. Jennifer M. and Mr. Jarad Kent
Mr. and Mrs. Ray W. Kent
Ms. Donya Kerby
Mrs. Shanna G. Kerby
Ms. Reann Kiang
Mrs. Sue Green Kiely
Mrs. Gerry C. Killian
Ms. Linda Kingsbury
Ms. Sandra Kirkland
Ms. Delores C. Kirkpatrick
Ms. Heather L. Kitchen
Mr. William Kitchen
Kiwanis Club of Jacksonville
Ms. Kelly J. Klebes
Ms. Alyssa Knowlton
Ms. Lauren Kolbert
Mr. and Mrs. Ben F. Koonce
Ms. Kylee Koonce
Korzeniewski Family Foundation
Ms. Sharon Kozlovsky
Mr. Edward Kraemer
Mr. and Mrs. Richard A. Kraft
Mr. Kaitlynn Krall
Mr. Caitlin Kruger
Mr. and Mrs. Paul Krutza
Ms. Michelle C. Kuechle
La Invasora - KOYE 96.7
Ms. Keviesha L. Lacy

Lakeport Ace Hardware #16803
Ms. Shauna G. Lambeth
Ms. Kristi Landgraf
Ms. Nancy Landry
Ms. Rita Lane
Ms. Brittany Laneaux
Ms. Jessi E. Lanier
Mr. and Mrs. Elias D. Fajardo
Larry's Interiors Inc.
Ms. April Larson
Las Palomas Grocery Store
Ms. Cassie D. Lawson
Mr. Daven Layman
Ms. Michelle Le
Ms. Kathryn R. Leblanc
Ms. Charly Lees
Ms. Christine M. Legler
Ms. Kristina Leippy
Dr. and Mrs. Jarrod C. Leisch, D.D.S.
Ms. Ashley LeMon
Ms. Nallely Leon
Ms. Aimee E. Lewis
Ms. Diana Lewis
Ms. Luanna Lewis
Mrs. Martha Lewis
Ms. Teresa Lewis
Ms. Kasie Lightfoot
Dr. and Mrs. Tsauyu Lin
Ms. Brittany M. Little
Mr. and Mrs. Charles R. Little
Ms. Emileigh Little
Dr. and Mrs. Steven Lomax
Mrs. Britni S. Long
Mr. and Mrs. Frank Lookadoo
Ms. Isabel Lopez
Ms. Maria G. Lopez
Ms. Megan Lopez
Mrs. Barbara D. Love
Mr. and Mrs. David Lovelady
Love's Travel Stop & Country Store
Mr. and Mrs. Harold R. Lowe
Ms. Carol A. Lucas
Ms. Heather Lucas
Ms. McKenna Lucas
Ms. Annetta Lucio
Ms. Macy Luis
Ms. Kendra Lynch
Ms. Chealsey L. Lyon
Ms. Joann Maack
Ms. Wendy S. Maae
Ms. Katherine B. Macias
Ms. Luz Magana
Mrs. Deborah A. Mahler
Malcolm Reed Ventures LP
Ms. Sandra H. Maldonado
Mr. James L. Mallory
Ms. Brandi M. Malone
Mr. and Mrs. S. Pat Malone
Ms. Beverly S. Mamey
Mr. and Mrs. Ben Y. March
Ms. Brandi S. Marsh
Ms. Samantha Marshall
Ms. Angela F. Marson
Ms. Jillian Martin
Mr. and Mrs. Michael W. Martin
Ms. Shelley Martines
Mrs. Heather L. Martinez
Ms. Marisa Martinez
Ms. Roxanna Martinez



Mrs. Stephanie C. Martinez
Ms. Cynthia Martyn
Ms. Ethel F. Marvels
Ms. Summer Mashburn
Ms. Forsythia Mason
Ms. Amanda Massengale
Mr. and Mrs. Chris Massey
Mr. and Mrs. Shelby L. Massey
Mrs. Nellie A. Massie
Ms. Sharon C. Massingill
Mr. Dante Matero
Ms. Traci Matlock
Ms. Erin Matthews
Ms. Lisa C. Matthews
Ms. Kristin Mauldin
Mr. Bob W. Maupin
Ms. Debi Maynard
Mrs. Deborah A. Maynard
Ms. Laurel Maynard
Ms. Suzette McAuley
Mr. and Mrs. Brian K. McCabe
Mr. and Mrs. H. Wayne McCarley
McCarthy Holdings, Inc.
Mrs. Brittany L. McCarty
Ms. Georganne McClain
Mr. and Mrs. Daniel M. McClellan
Ms. Rafaila McClone
Mr. and Mrs. Willie L. McCloud
Ms. Kimberly McCloud
Mr. and Mrs. John A. McComic
Ms. Deborah F. McCowin
Mr. and Mrs. Floyd R. McCown
Ms. Shayna McCoy
Ms. Kali McCullough
Ms. Kelly McCullough
Ms. Jordan McCunn
Ms. Nancy McCurry
Ms. Paula McDonald
Ms. Danette McFee
Mr. and Mrs. Edgar L. McGee
Ms. Jana J. McGill
Ms. Mandi McGlumphy
Ms. Christina C. McGrew
Ms. Baley McGuire
Ms. Penny Mckenzie
Ms. Sarah McKinney
Ms. Tammy McKinney
Ms. Tammie McMillan
Ms. Mallorie McMullen
Mr. and Mrs. David McMurray
Ms. Christina McNamara
Ms. Shelby McNeill
Ms. Kristen McShan
Ms. Payton McVey
Ms. Jasmin Medina
Ms. Amanda Meek
Ms. Elisabeth Meeks
Ms. Rebecca Meester
Mr. and Mrs. Joseph A. Mele
Ms. Antonia Melendez
Ms. Debra Mendez
Ms. Cassandra Metcalf
Ms. Jeannie Mewbourn
Ms. Megan Miles
Mrs. Marisol Millan
Mr. and Mrs. C. Dean Miller
Ms. Ina K. Miller
Mr. and Mrs. Kevin H. Miller
Mrs. Melanie Miller

Mineola Ace Hardware
Mineola Kiwanis Club
Ms. Debra E. Minnick
Mrs. Aulbry L. Mitchell
Ms. Erika Mitchell
Mr. John K. Mitchell
Ms. Jackie Mitre
Ms. Sheree A. Mize
Ms. Taylor Mize
Mr. Roger Mobley
Ms. Joan Molette
Molson Coors Beverage Company
Ms. Ashley Moncrief
Mr. Billy L. Montgomery
Mr. Martin Montgomery
Ms. Nicole Montgomery
Ms. Brooklyn Moon
Ms. Paula Moore
Ms. Carly Moore
Ms. Connie Moore
Ms. Janequia Moore
Ms. Joslyn Moore
Ms. Megan Moore
Ms. Tabitha K. Moore
Ms. Ana M. Morales
Ms. Sandra Morales
Moran Munchies Inc
Ms. Leticia E. Moreno
Ms. Jennifer Morgan
Ms. Macey Morgan
Ms. Macey Morgan
Ms. Pharris Morgan
Ms. Haley Morris
Dr. Brenda H. Morris
Ms. Leddie Morris
Ms. Shamyra Morris
Ms. Sheryl Morris
Mr. and Mrs. Michael P. Morrison
Ms. Tammie Morrow
Mosby Mechanical Co., Inc.
Ms. Jennifer Moser
Mr. and Mrs. Ben Mosier
Mr. Joel Mosier
Ms. Robin Mosley
Ms. Michelle Moss
Ms. Marla Moss
Ms. Cynthia L. Mrdjenovich
Ms. Hailey Mullenax
Ms. Darla Mullens
Mr. and Mrs. Michael A. Mundt
Ms. Chelsea C. Munoz
Mr. and Mrs. Simon Munoz
Mr. and Mrs. John A. Murphy
Mr. and Mrs. John F. Murphy
Corbin Murray
Ms. Dorothy Murry
Ms. Vicki Nackos
Ms. Jordyn Namanny
Ms. Jacquelyn Nash
Ms. Sarah Neeley
Ms. Hannah Neely
Ms. Courtney Nelson
Ms. Meghann Neubauer
Mr. and Mrs. Brad Newberry
Ms. Tawni Newburn
Mr. and Mrs. Michael C. Newsom
Ms. Carley Newsom
Mr. and Mrs. Johnny Newsom
Mr. Artis E. Newsome

Ms. MacKenzie C. Newsome
Dr. David F. Nichols
Ms. Skylynn Nichols
Ms. Laurie Nicholson
Ms. Rosie Niebuhr
Ms. Moria A. Niekamp
Ms. Amanda B. Nielsen
Noonday Hardware & Auto Parts
Mr. and Mrs. Christopher Norman
Dr. Brett R. Noteware
Ms. Jessica Noteware
Ms. Jessica Nowell
Ms. Josey Nowell
Ms. Kirsten Noyola
Mr. Billy J. O'Barr
Mr. and Mrs. Michael O'Brien
Ms. Angela B. O'Connor
Ms. Ton Oden
Mr. and Mrs. Michael Ogg, Jr.
Mr. and Mrs. Brad O'Leary
Ms. Deidre Oliver
Ollie's Bargain Outlet
Ms. Noemi Olvera
Ms. Annette O'Neal
Ms. Cheryl Oneal
Ms. Kimberly M. Ontiveros
Ms. Frances Orozco
Ms. Gabriella Ortega
Ms. Haven Osborne
Ms. Kimberly Osbourn
Ms. Jessica Osorio
Ms. Debbie Oullivan
Ms. Juanita E. Oviedo
Ms. Shelley Owen
Mrs. Angela E. Owens
Mr. and Mrs. Cody Owens
Ms. Kaila B. Padilla
Ms. Noralea Page
Ms. Terri Palmer
Panda Restaurant Group, Inc.
Ms. Christine M. Pannell
Ms. April Parish
Ms. Brittany Parker
Ms. Kristina Parker
Ms. Madison Parker
Ms. Star Parker
Ms. Ashley Parnell
Mr. and Mrs. Justin W. Partlow
Mr. Adrian M. Pate
Ms. Katie Pate
Ms. Savitaben J. Patel
Mr. and Mrs. Kevin Patrick
Ms. Lyric L. Patterson
Ms. Stephanie Patterson
Ms. Leilani R. Pattings
Ms. Carin A. Paulino
Mr. Curtis Payne
Mr. and Mrs. Kyle D. Payne
Paypal Charitable Giving Fund
Ms. Brittney Peoples
Ms. Amber Pendleton
Ms. Jabeth T. Percell
Ms. Adriana Perez
Ms. Leticia Perez-Ortiz
Ms. Krystal L. Perkins
Ms. LeAnn W. Perkins
Ms. Megan Perkins
Ms. Shannon Perkins
Ms. Misty Permenter

Ms. Madeline Perou
Ms. Holly Perry
Ms. Jenny Perry
Ms. Corey Perry Lopez
Mr. Jason Peschke
Mr. Jeffery T. Petersen
and Ms. Ann M. Hoover
Mr. and Mrs. R. Ryan Pettit
Petty's Irrigation & Landscape
Mr. and Mrs. Robert S. Peveto, Jr.
Dr. Janett Phelps
Ms. Brandi L. Phillips
Ms. Michelle Phillips
Ms. Crystal Pickett
Ms. Tisha Pickett
Ms. Caroline Pillsbury
Ms. Daisy Pineda
Mr. and Mrs. Richard A. Pinto
Ms. Kirby Pippins
Dr. and Mrs. Paul W. Pitts
Ms. Carolina Plata
Ms. Susan F. Plaza
Ms. Mary Pamela Pliker
Ms. Christina Pollard
Mr. and Mrs. Rogers Pope, Sr.
Ms. Alyssa Porto
Ms. Kayley Poteet
Ms. Samantha Powe
Mr. and Mrs. Michael R. Powell
Ms. Tonya Powell
Mr. and Mrs. Johnny M. Powers
Ms. Katy Preston
Mrs. LaShundra Price
Ms. Becky Pricer
Ms. Ami Pritchett
Ms. Jennifer R. Pruitt
Ms. Tierra Prunty
Ms. Erika Pulice
Mr. and Mrs. Bill Pulliam
Dr. Nancy L. Pusser
and Mr. Timothy C. Sherwood
Mr. Ronal G. Pyle
Quarter-Vend, LLC
Ms. Rae Quezada
Ms. Crystal L. Quigg
Ms. Nikki Quillen
Ms. Amber Quillin
Mr. and Mrs. David Quinn
Ms. Rameen B. Qureshi
Ms. Laura J. Radde
Ms. Gena L. Ragland
Mr. and Mrs. R. Tayloe Ragland
Mr. Ken Ragsdale
Ms. Cindy A. Rainer
Raising Canes Restaurants, LLC
Mr. Joe Ramirez
Ms. Maria Ramirez
Mr. and Mrs. Chad Ramsey
Ms. Michelle Randall
Ms. Penny A. Range
Ms. Jennifer Raspberry
Mrs. Jennifer Raspberry
Ms. Shannon Rawlinson
Ms. Melissa Ray
RE/MAX Integrity
Re/Max International
Ms. Anna Read
Mr. and Mrs. Royce E. Read
Ms. Jennifer Realina





- Red Bull**
 Mr. and Mrs. Richard R. Redman
 Ms. Debra Redmon
 Ms. Andrea Reed
 Ms. Jennifer Reeves
 Mr. and Mrs. Wendell J. Rehm
 Dr. Margaret R. Reitmeyer
 Ms. Mashall Reller
 Mr. and Mrs. Matt Renick
 Mr. Harley Reveles
 Ms. Ardrenne Reynolds
 Ms. Christy Reynolds
 Ms. Della M. Reynolds
 Mr. and Mrs. Randy Reynolds
 Ms. Karen Rhame
 Mr. and Mrs. Joseph D. Richardson, Jr.
 Mrs. Lucille O. Richardson
 Ms. Mary Richardson
 Mr. Bruce A. Richter
 Ms. Renee Riffe
 Ms. Andrea Ringgold
 Ms. Leah Rinlee
 Mr. and Mrs. J. Reed Rippy
 Ms. Stephanie Risley
 Ms. Tara E. Ritzma
 Ms. Camesha Roberts
 Mr. and Mrs. Dick Roberts
 Ms. Mariama Roberts
 Ms. Sarah Roberts
 Ms. Marsha M. Robertson
 Mr. Brady H. Robinson
 Ms. Cari Robinson
 Ms. Rebecca J. Robinson
 Mr. Randy Rodrigues
 Mr. Christian Rodriguez
 Ms. Melissa Rodriguez
 Ms. Loreal N. Roe
 Mr. Doug Rogers
 Dr. and Mrs. James R. Rogers
 Ms. Joan F. Rogers
 Ms. Kara D. Rogers
 Ms. Montoya Rogers
 Rojo's Mobile Cuisine
 Mr. Jhovani Romero
 Ms. Elizabeth Ronning
 Ms. Rebecca Roper
 Ms. Jessica R. Rose
 Ms. Kennedy Rose
 Rose XOXO Boutique, LLC
 Ms. Courtney A. Rosenstein
 Ms. Emily Ross
 Mrs. Freda D. Ross
 Ms. Joanne M. Ross
 Ms. Kimberly Ross-Manning
 Ms. Jabria M. Roy
 RTR 2030 LLC
 Mr. and Mrs. Emilio Rubio
 Ruby's Mexican Restaurant #3
 Ms. Callie Rucas
 Ms. Rayna Rudasill
 Ms. Brooke Ruiz
 Ms. Rebecca Ruiz
 Ms. Alanna Rushing
 Ms. Amanda R. Rousseau
 Mr. and Mrs. Don Russell
 Ms. Jaime Russell
 Ms. Lynn A. Russell
 Ms. Sheril Russell
 Saddle Creek Nurseries, LLC
- Ms. Kim Sage
 Ms. Carrie R. Salas
 Ms. Summer Salas
 Ms. Jocabed Saldana
 Mr. and Mrs. Daniel C. Saleh
 Ms. Rebeca Salgado
 Mr. and Mrs. John Salisbury
 Mr. Luke Salter
 Ms. Jana Samples
 Ms. Lisa Sampson
 Ms. Teresa Samuel
 Ms. Giovanna Sanchez
 Ms. Brenda Sanchez
 Mr. Carlos Sanchez
 Ms. Ericka L. Sanchez
 Ms. Emily Sanderson
 Ms. Leonora Santos
 Ms. Giselle Sarios
 Ms. Kelsi Sasser
 Saucy Ladies
 Ms. Sandra K. Schafer, CPC
 Ms. Ashley R. Schick
 Mr. Ronnie J. Schomerus
 Ms. Dana Scott
 Ms. Jennifer Scott
 Ms. Michelle C. Scott
 SDS Petroleum Consultants, LLC
 See's Candy Shops, Inc.
 Mr. Nathan W. Sewell
 Shafer Land and Timber
 Mr. Tommy Shank
 Mr. Billy Shannon
 Ms. Sylvia R. Shaver
 Mr. Michael Shaw
 Ms. Lindsey Shawver
 Ms. Allison Shelton
 Ms. Haley Shepherd
 Ms. Heather Shertzer
 Ms. Ali Shields
 Mr. and Mrs. Travis S. Shipp
 Ms. Stephanie Shortridge
 Mr. Jamie W. Shults
 Ms. Janelle Sibley
 Ms. Christine Silverstein
 Ms. Barakha Y. Silvia
 Ms. Amanda Simmons
 Ms. Joan Simmons
 Ms. Sonja M. Simmons
 Ms. Karen S. Sims
 Ms. Rebecca Sims
 Ms. Katherine Sisemore
 The Honorable
 and Mrs. Jack Skeen, Jr.
 Ms. Kodi Skillings
 Mr. and Mrs. Dan Skinner
 Mr. James D. Skinner
 Ms. LeeAnn Skinner
 Mrs. Jamie N. Slagle
 Ms. Brittany Slatton
 Mr. Trey Sloan
 Ms. Deena J. Sluder
 Ms. Amber J. Smart
 Ms. Autumn Smiddy
 Smile.Amazon.com
 Mr. Colin Smith
 Mrs. Donna M. Smith
 Ms. Emily Smith
 Ms. Finley Smith
 Ms. Janice C. Smith
- Ms. Jeanna Smith
 Ms. Mandy Smith
 Ms. Mary Ann P. Smith
 Mrs. Melissa Smith
 Ms. Michelle Smith
 Ms. Morgan Smith
 Mr. and Mrs. Roger D. Smith
 Ms. Ruth Ann Smith
 Mr. Sam Smith
 Ms. Shannon K. Smith
 Ms. Shayna L. Smith
 Ms. Shelby Smith
 Mrs. Stacie L. Smith
 Ms. Stephenie Smith
 Ms. April Snyder
 Ms. Sherri Sochaski
 Mr. Kelly W. Soger
 Mr. and Mrs. W. Chad Solomon
 Sons of the American Legion -
 Squadron 12
 Mr. and Mrs. Charles L. Sorrells
 Southwestern Cleaning Service
 Ms. Lauren Spaine
 Ms. Roni Sparks
 Mr. and Mrs. David R. Spears
 Mr. James E. Speier, Jr.
 and Ms. Joann Boyd
 Mr. and Mrs. Christopher S. Spence
 Mr. and Mrs. Perry Spence
 Ms. Lexi Spencer
 Miss Olivia D. Spencer
 Ms. Daphne L. Stafford
 Ms. Maegan D. Stanly
 Ms. Dominika Stanovic
 Ms. Megan Starkey
 Mr. and Mrs. Charles L. Starks
 Ms. Jennifer Steed
 Ms. Kari Steed
 Ms. Amber M. Steele
 Ms. Jamie Steele
 Ms. Lisa Steelhammer
 Ms. Christy Stephenson
 Ms. Montana Stephenson
 Ms. Jessica Stidham
 Mr. and Mrs. Harry H. Stiles Jr.
 Ms. Ashley Stine
 Ms. Kelsey Stokes
 Mr. and Mrs. Michael Stokes
 Mrs. Robin S. Stokes
 Ms. Kayla Stombaugh
 Ms. Charlcie R. Stone
 Ms. Shannon Storrs
 Mr. and Mrs. J. Brad Streit
 Ms. Brandi C. Strom
 Ms. Diana Strom
 Mrs. Penny L. Strong
 Ms. Jean M. Strother
 Ms. Carolyn S. Stroud
 Mr. and Mrs. James C. Stroud, Jr.
 Ms. Libby Stroud
 Dr. and Mrs. Earnest W. Stroupe
 Ms. Briana Strube
 Ms. Debra M. Stubbs
 Mrs. Jennifer L. Sudduth
 Mr. and Mrs. Tommy T. Sukiennik
 Ms. Donna Sullivan
 Ms. Phyllis Sullivan
 Ms. Tulesha Summers
 Mrs. Terri D. Sumpter
- Ms. Amy Svensson
 Ms. Mindy Svesko
 Mr. Chase Swann
 Ms. Dana M. Swann
 Ms. Vu Ta
 Ms. Desiree Talbert
 Taqueria Luna
 Ms. Brenda Tarango
 Mr. and Mrs. Monty J. Tarbutton
 Mrs. Mary Anne L. Tarrant
 Ms. Teresa D. Tarrant
 Mrs. Sandra Tatum
 Ms. Debra Taylor
 Ms. Mackenzie Taylor
 Ms. Mariah I. Taylor
 Mrs. Melissa G. Taylor
 Ms. Nicole Taylor
 Ms. Sabrina L. Taylor
 Ms. Stephanie Taylor
 Dr. Tiffany and Mr. Chad Taylor
 Ms. Wanda Jo Taylor
 Ms. Jenny Teague
 TEGNA Foundation/Good Done Great
 Dr. Zehra Tekin
 Ms. Shelby Tellechea
 Mr. Alvin D. Temple
 Pineda Teodoro
 Ms. Rebecca Thayer
 The Genecov Group, Inc.
 Ms. Emily Thiel
 Ms. Kelsey Thomas
 Mrs. Marvetta J. Thomas
 Ms. Patricia Thomas
 Ms. Stephanie Thomas
 Ms. Mary L. Thomas
 Ms. Angela L. Thompson
 Ms. Brittany Thompson
 Mrs. Sandra G. Thompson
 Mr. Todd W. Threlkeld
 Ms. Mary Tidwell
 Ms. Cassie Timms
 Mr. and Mrs. F. Joe Tincher
 Dr. and Mrs. Herschel W. Tipton
 Mr. and Mrs. Jeremy Titsworth
 Ms. Jana Titsworth
 Ms. Joesielyn L. Toling
 Ms. Susan Tolleson
 Ms. Alyssa Tompkins
 Ms. Kyndl Tompkins
 Ms. Norma J. Tompkins
 Mr. and Mrs. Robert Tompkins
 Ms. Joellen J. Tooty
 Ms. Elda Torres
 Ms. Mariza Torres
 Ms. Karley Townsend
 Ms. Leigh Trcka
 Mr. and Mrs. Marshall C. Treadwell
 Ms. Abigail Trejo
 Ms. Trish Trejo
 Mr. and Mrs. Michael A. Tresca
 Ms. Haily Trotter
 Mr. and Mrs. Sebastian Trowse
 Ms. Marla J. Tucker
 Mr. Preston J. Tucker
 Ms. Tiffany Tupont
 Ms. Caley Turner
 Ms. Carol A. Turner
 Ms.Carolynn Turner
 Mr. and Mrs. David Turner



Ms. Chelsea Turney
Mr. and Mrs. Richard L. Tuz
Ms. Gwendolyn S. Tyler
Tyler Roofing Company
Mrs. Amanda J. Uncapher
Ms. Wendy L. Underwood-Tipps
United Networks of America
United Way of Tyler/Smith County
Ms. Cassidy Uptmor
US Connect
Ms. Wendy Valdetero
Ms. Angelica Valdez
Ms. Jackie Valdez
Valvoline Instant Oil Change
Ms. Hannah Van Winkle
Ms. Roslyn D. Van Winkle
Ms. Vanessa Vasquez
Ms. Karla D. Vaughan
Mr. Robert R. Viana
Ms. Wendy A. Villalpando
Ms. Karol Villarreal
Ms. Diana Villedas
Ms. Haylee R. Voyles
Dr. and Mrs. R. Brent Wadle
Mrs. Jessica L. Waites
Ms. Cydney Waits
Mr. and Mrs. Kenneth S. Waits
Ms. Toni Waldron
Mr. and Mrs. Geoffrey Walker
Mr. Jesse Walker
Dr. and Mrs. John F. Walker
Ms. Stephanie M. Walker
Ms. Ventress Walker
Ms. Erica Wallace
Walmart

Ms. Elizabeth A. Walters
Ms. Hannah Walton
Dr. and Mrs. Frank T. Ward
Ms. Anita J. Warren
Ms. Stacy Warren
Wash Depot Holdings, Inc.
Ms. Bethlatae R. Washington
Ms. Allison L. Watson
Ms. Deborah J. Watson
Ms. Morgan B. Watson
Ms. VaNedra Watson
Ms. Kelli D. Waymire
Ms. Renee Weatherford
Ms. Taylor Weathers
Ms. Melissa N. Weber
Ms. Barbara Wedgeworth
Ms. Kaffy Wedgeworth
Ms. Sherry Weeks
Mr. and Mrs. Robert C. Weissmann III
Ms. Tiffany Welborn
Mr. J. D. Weldon
Ms. Alexis Wells
Ms. Melissa L. Wells
Mr. and Mrs. Robert B. Wells
Ms. Kathy Welsh
Dr. and Mrs. Waymon Wesley
Mr. Hailey West
Ms. Heather West
Ms. Krissy West
Ms. Tumeka West
Ms. Amanda M. Westbrook
Mr. and Mrs. Don L. Westbrook
Western Extrusions
Ms. Jessica Westmoreland
Ms. Angela Weston

Ms. Marisa L. Whaley
Mr. and Mrs. Monty L. Whetstone
Ms. Kelsey White
Ms. Kristen K. White
Ms. Mari White
Ms. Toni White
Mr. and Mrs. Richard Whitfield
Mr. and Mrs. Donald M. Whitmer
Ms. Melissa Whitus
Ms. Kim Whitworth
Mr. and Mrs. Terry D. Widdows
Ms. Sherry Wiersema
Mr. and Mrs. Brad Wilburn
Mr. Jerry W. Wilder
Ms. Jasmine N. Williams
Ms. Abigail L. Williams
Ms. Bianca Williams
Mrs. Dena Williams
Ms. Jenifer Williams
Ms. Kathryn Williams
Ms. Natalie Williams
Ms. Sharon K. Williams
Ms. Temika Williams
Ms. Timkia L. Williams
Mrs. Vickie R. Williams
Mr. and Mrs. Christopher D. Willis
Ms. Katherine Willis
Mrs. Charlotte Wilson
Ms. Jillian Wilson
Ms. Lisa Wilson
Mr. and Mrs. R. K. Wilson III
Ms. Sharla Wilson
Mr. Martin Wimberley
Mr. Joseph Windham
Ms. Katy Windham

Ms. Jennifer R. Winegeart
Mr. and Mrs. Chris Woldert II
Mrs. Lacy Wolf
Ms. Meghan Womack
Ms. Charlie Wood
Ms. Teresa L. Wood
Mr. James Woodall
Ms. Karly Woodard
Ms. Christen Woods
Mr. and Mrs. Roy Woods
Ms. Stephanie L. Woods
Mrs. Patricia C. Woolard
Ms. Melissa Wooldridge
Ms. Jodie Work
Ms. Jessica Worrell
Ms. Carolyn Wright
Ms. Margaret L. Wright
WRL General Contractors LTD
Ms. Helena Wyckoff
Ms. Danja Yanez
Ms. Traci Yarbrough
Ms. Stephanie Yates
Ms. Suzanne L. Yates
Mr. and Mrs. Justin Yeley
Mr. and Mrs. Michael C. Young
Ms. San Juanita Yzaguirre
Ms. Anna Zachary
Mr. Daniel Zavala
Ms. Margaret Zieman



Debra Abbuhl
 Amber Adair
 Pamela S. Allen
 Royce E. Allen
 Elizabeth V. Alvarado
 Andrea R. Anderson
 Angela L. Anderson
 Lauren Anderson
 Melissa K. Anderson
 Monica Anderson
 Patricia Anderson
 Richard L. Anderson
 Shannon Anderson
 Jordan P. Anderson-Kaapa
 Anonymous
 Sarah Appl
 Kelli J. Armour
 Rebekkah L. Armstrong
 Onsuree D. Arredondo
 Dora Arteaga
 Elizabeth J. Ausburn
 Brooklyn Auvenshine
 Amanda K. Bailey
 Meagan L. Bailey
 Amanda B. Baker
 Julie S. Baker
 Kristyn Ballard
 Sofia R. Barbosa
 Kimberly A. Barnett
 Alisha C. Barron-Clark
 Venita D. Basham
 Emilinda I. Bautista
 Victoria E. Beall-Crow
 Julie A. Beam
 Jason C. Beaton
 Camillia Bell
 Elizabeth P. Bell
 Ashley L. Bennett
 Chasity L. Bennett
 Tacola Bennett
 Tracey A. Bennett
 Vicky S. Benscoter
 Brooke L. Bentley
 Ryan Berger
 Christopher L. Bergfeld
 Micha Biggar
 Martha R. Bitter
 Julie A. Blakeley
 Jodie J. Blanchard
 Christine A. Blaylock
 Kimberly D. Bobbitt
 Edward R. Boggess
 Beth Boothe
 Mark A. Borders
 Diane C. Bottoms
 Kimberly J. Bounds
 Ferdinand J. Boutin
 Ethel M. Bowie
 Jo Ann Bowie
 Darrell W. Bowman
 Ka'Nivea N. Bowser
 Michelle M. Boykin
 Teena M. Boyles
 Jacqueline E. Bozick
 Jessica Bradford
 Melissa D. Bradford
 Mandy K. Bradshaw
 Kristen E. Brady
 LaToya C. Branham
 Kathryn J. Brazzel

Angela D. Bright
 Christi A. Britton
 Kenneth D. Britton
 Elizabeth R. Brodeur
 Jennifer L. Broome
 Melissa E. Broughton
 Lisa G. Brown
 Melissa A. Brown
 Michelle L. Brown
 Richard Brown
 Shellwyn J. Brown
 TaNasha Brown
 Leigh Ann Bryce
 Tandra M. Bryner
 Sedina Bunch
 Jana L. Burcham
 Christie M. Burge
 Jennifer M. Burleson
 Donna M. Burnley
 Jennifer Buskell
 Rhonda Butler
 Jacob M. Cabrera
 Catherine Cachero
 Jerry L. Calender
 Robert H. Campbell IV
 Windy L. Cannon
 Morgan Carevic
 Eme L. Carrera
 Betsy C. Carson
 Candance Carson
 Regina Carver
 Connie H. Catalani
 Maria Caturan
 Kurtis C. Cauley
 Elizabeth M. Causey
 Gale Chalk
 Tiffani M. Chamberlain
 Cynthia D. Chapman
 Amber N. Chauncey
 Iran Chavez
 Theresa A. Cheaney
 Deb L. Chelette
 Amanda Chiles
 Sherri Christiansen
 Cynthia L. Christopher
 Jenni Chumley
 Haley L. Clark
 Nina Clay
 Jami V. Clayborne
 Laura Clinton
 Sharon D. Cobb
 Amy Beth Collins
 Cassie Collins
 Jennifer K. Collins
 Annette B. Colorossi
 Shirley M. Combs
 Tracy M. Cook-Valentine
 Elizabeth Cooper
 Tina M. Cooper
 Kathy M. Cope
 Jennifer K. Copeland
 Tashyra Cork
 Tracy N. Corley
 Dana A. Cornett
 Andrew L. Cornish
 Shannon Costlow
 Ginnie L. Covey
 Traci N. Crane
 Theresa I. Crawford
 Melissa R. Crim

Mary Cross
 Janice C. Crowder
 Deborah Crowley
 Sage O. Curtis
 John D. Daniel
 Sarah K. Daniel
 Rebecca E. Daniels
 Theresa Darbin
 Carrollyne C. Davis
 Heather K. Davis
 Sheila J. Davis
 Robert G. Day
 Alexis Deculus
 Emily B. Dees
 Lisa Deiger
 Geertje DeJong
 Alexander Del Angel
 Dora P. Delapaz
 Debra L. DeLaRosa
 Joseph A. Dennis
 Kristy M. Dewbre
 Brandon C. Dike
 Lisa Dillon
 Eneida T. Dixon
 Ken Dodd
 Sondra A. Dodgen
 Drema L. Domain
 Kristi Donnell
 Jennifer L. Dooley
 Dee Ann Dorsey
 Barbara J. Dotson
 Linda J. Dotson
 Lindsay N. Downing
 Shaquita L. Dunning
 Hayley N. Eberlan
 Marcia S. Edwards
 Ivy Ekre-Boe
 Hearthly L. Emerick
 Katy E. Ereman
 Victoria C. Estacio
 Leisa L. Ethridge
 Ann Marie Fate, FNP-C
 Samantha A. Fay
 Christel Ferguson
 Paul A. Fike
 Niki M. Fincher
 Stephanie Flores
 Kasandra L. Flournoy
 Erin E. Flowers
 Kristi D. Floyd
 Holly Fortenberry
 Scott F. Fossey
 Tina Foster
 Veronica C. Fox
 Beverly G. Francis
 Demetria Franklin
 Jennifer A. Freeman
 Jennifer W. Fritz
 Lisa K. Frowick
 Bobbi Fryar
 Cynthia A. Fulton
 Christine J. Gardner
 Emily G. Garner
 Katelynn Garner
 Michael W. Garner
 Alisha M. Garrett
 Nancy C. Garrett
 Monaliza Gaw
 Theresa A. Geisler
 Richard J. Gerth, Jr.

Samantha A. Gilleland
 Con'ya L. Goss
 Micho L. Grady
 Robert R. Graham
 Georg'n Granberry
 Ryan Grant
 Cheryl L. Gray
 Renee S. Gray, NNP-C
 Lourie Green
 Stacy L. Gregory, NP
 Marcelitte L. Grier
 Shawn H. Griffin
 Monica Grosz
 Matt Gunst
 Carla M. Gustafson
 Angela M. Halfpenny
 Courtney L. Hamby
 Carla K. Hamer
 Stephanie T. Hankins
 Patricia A. Hanna
 Denise L. Harmon
 Valarie S. Harper
 Donald Harris
 Jennifer A. Harrison
 Sarah Harrison
 Brandi L. Hassell
 Kayla Hasten
 Jana Haught
 Jennifer L. Hawkins
 Jennifer A. Head
 Erica Helm
 Amber Henry
 Debbie Henson
 Megan Henson
 Maria K. Hernandez
 Alicia Herndon
 Erin N. Herring
 April L. Herschbach
 Vicky L. Hickman
 Jennifer M. Higginbotham
 Jeffrey M. Hill
 Hollie M. Hilliard
 Mike G. Hines
 Latoshi Hines-Williams
 Susan B. Hinson
 Robert W. Hitt
 Wendy L. Hoecherl
 Ashton Holecek
 Teri J. Holley
 Sheila Hollis
 Carla J. Holmen
 Randy R. Holmes
 Cindy Hooks
 Mary B. Hooper
 Chelsea R. Hope
 Michelle Hopkins
 Sydney N. Houser
 Sara L. Housley
 G. Michael Houston
 Misty Houston, NP
 Cassandra D. Howard
 Jane P. Howard
 Megan Howard
 Ronnie Howell
 Edward Howerton
 Deborah A. Hubbard
 Laura K. Hubl
 Fredda A. Hudson
 Cynthia L. Hughes
 Jennifer L. Hugo

Casey L. Hull
 Vanessa Hunter
 Manuela I. Ibarra
 Theresa Irons
 Holly B. Izard
 Mary Elizabeth Jackson
 Patricia G. Jackson
 Paula J. Jackson
 Amanda R. Jenkins
 Alison Jennings
 Amy Joffrion
 Sherin John
 Vicki M. Johns
 Dana A. Johnson
 Gaile Johnson
 Jan H. Johnson
 Matthew Johnson
 Tonya R. Johnson
 Victoria L. Johnson
 Dawn M. Johnston
 Teresa Jones
 Teresa A. Jones
 Salina Juarez
 Aaron W. Katchmarik
 James D. Keith
 Kristen A. Keith
 LaDonna N. Kelley
 Julie M. Kelsey
 Amanda L. Kennedy
 Madeline Kennedy
 Zelma L. Kennedy
 Shanna G. Kerby
 Roberta Kilmer
 Misty M. Kimbrough
 Gena D. King
 Sarah C. King
 Erica Kirkpatrick
 Lorinda Knight
 Michelle C. Kuechle
 Brett S. Lackey
 Keviesha L. Lacy
 Remonda A. Lacy
 Debra B. Lambert
 Shauna G. Lambert
 Kristi Landgraf
 Brittany Laneaux
 Jessi E. Lanier
 Sheri L. Lankford
 Nancy Lara-Fajardo
 Christine M. Legler
 Lea Anne Lemon
 Karleen K. Lennon
 Laura R. Lockhart
 Britni S. Long
 Nela W. Long
 William L. Look
 Maria G. Lopez
 Muzammil Lotia
 Brad D. Low
 Vickie L. Lowder
 Elizabeth R. Lowe
 Brianna M. Lozoya
 Joann Maack
 Katherine B. Macias
 Jamie L. Maddox
 Terry P. Maddox
 April D. Mahana
 Don R. Mahana
 Deborah A. Mahler
 Brandi S. Marsh

Michelle Martin
Aaron D. Martinez
Ana Martinez
Heather L. Martinez
Marisa Martinez
Stephanie C. Martinez
Amanda Massengale
Angie B. Matson
Brian Matson
Roxann Matthews
Jake Z. Mayfield
Deborah A. Maynard
Laurel Maynard
Lakaedron S. McCain
Deborah F. McCowin
Danette McFee
Jana J. McGill
Mea McGill
Christina C. McGrew
Marilyn R. McKellar
Sarah McKinney
Kristine A. McLaughlin
Sarah A. McLean
Christina McNamara
Alex Medina
Alma D. Medina
Rebecca Meester
Suzanne S. Melhart
Shaina L. Melton
Debra Mendez
Kati N. Metzger
Melanie Miller
Nancy M. Miller
Maria L. Mireles
Eric Mitre
Melissa Monson
Paula Moore
Patricia O. Moore
Tabitha K. Moore
Jean M. Moorhead
Ana M. Morales
Mariela E. Morales
Sandra Morales
Delightful L. Morris
Linda W. Moseley
Lori L. Moseley
Christina N. Mosier
Patricia D. Mott
Cynthia L. Mrdjenovich
Misty D. Muncy
Lydia A. Munoz
Liz Murphy
Leigh A. Murray
Stephen R. Murray
Andy Navarro
Cherie L. Neal
Sarah Neeley
Moria A. Niekamp
Jeffrey S. Nix
Misty Nix
Lydia C. Norman

Debbie A. Nunley
Amarina E. O'Byrne
Ton Oden
Ronald W. Odom
Kristen D. Oertling-Collins
Dr. Laura E. O'Halloran
Dalia Oliva
Christopher Oliveira
Yolandrea L. Oliver
Sara L. Oltmann
Annette O'Neal
Bejoy Oommen
Corinna A. Orms
Kimberly Osbourn
Juanita E. Oviedo
Angela E. Owens
Lisa A. Owens
Austin L. Padilla
Cherlyn L. Paez
Karen D. Page
Nellie Palacios
Sonia Z. Palacios
Stephanie Palmer
Christine M. Pannell
Gail Parker
Kristina Parker
Nanette Parras
Michele L. Pate-Dooley
Stephanie M. Patterson
Tisha M. Patterson
Kristi L. Payne
Jeri Pendarvis
Jason Peschke
Brandi L. Phillips
Magali G. Pilar
Anne E. Pileggi
Elizabeth L. Pino
Susan F. Plaza
Kiran Pokhrel
Tarneka Polley
Jennifer Ponce Colindrez
Pilar Pool Diaz
Catherine Poole
Dr. Wilfred O. Prados III
Sarah Preiser
Jason J. Proctor
Dr. Matthew T. Proctor
Ashley D. Pruitt
Rebekah L. Quarles
Holly A. Ragan
Cindy A. Rainer
Autumn Rainwater
Catherine E. Ramm
Janna H. Ramsey
Penny A. Range
Aline M. Ranido
Arcadio R. Ranido
Joanna R. Rankin
James W. Rapp
Katherine R. Redman
Barlow Reid

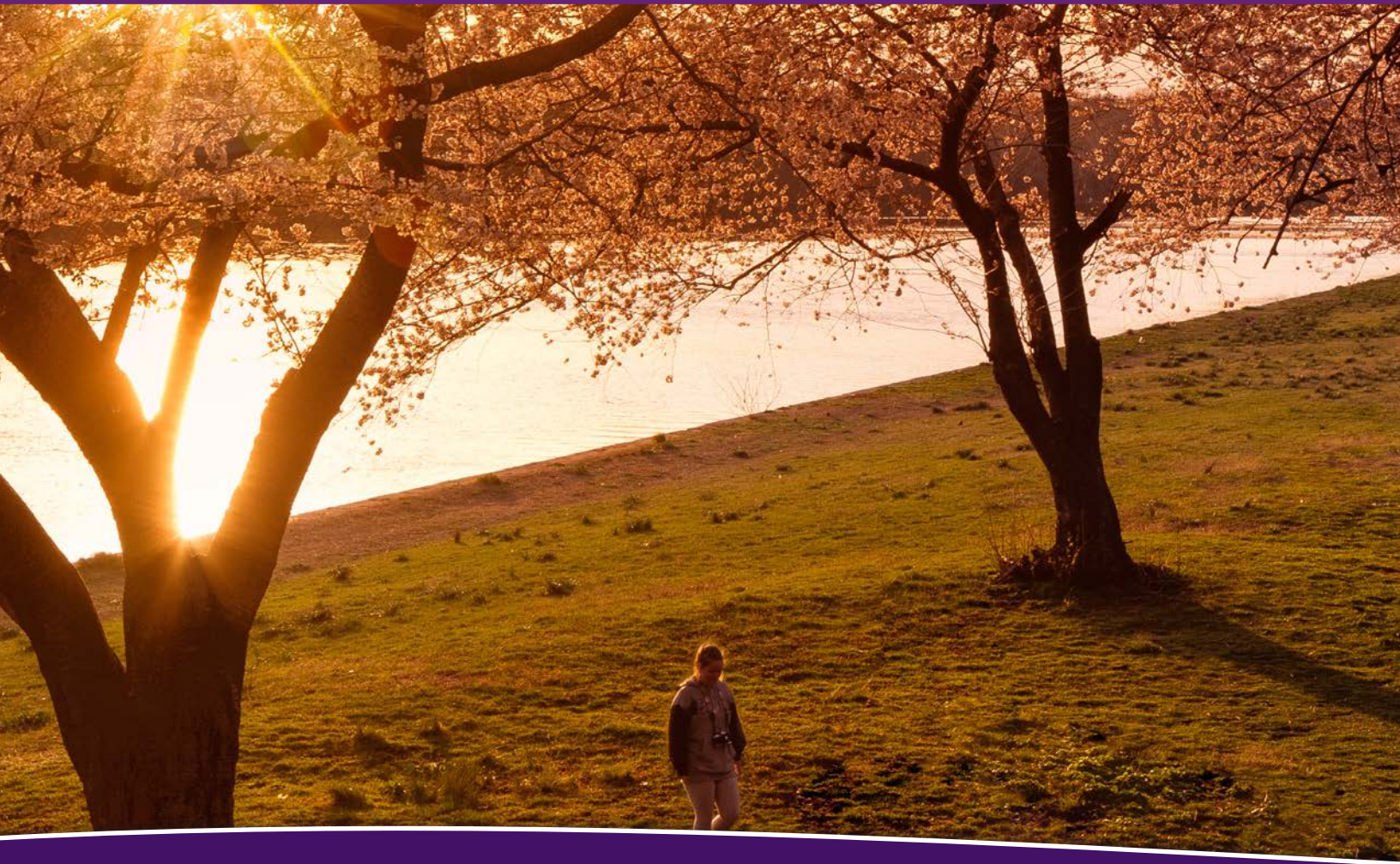
Linda H. Remer
Aida M. Renfroe
Lee Reue
Eva C. Reyes
Daniel E. Richardson
Jordyn M. Richardson
Kathy C. Richardson
Cyrus D. Ridenour
James D. Rider
Andrea J. Ries
Andrea Ringgold
Leah A. Rinlee
Suzie T. Rippey
Courtney L. Ritch
Michael R. Rivera
Christina Roberts
Janina Roberts
Marsha M. Robertson
Mary A. Robinson
Shelley R. Rockwell
Sydney Rodgers
James D. Rodgerson
Loreal N. Roe
Dr. James R. Rogers
Joan F. Rogers
Doris Rosario
Jessica R. Rose
Freda D. Ross
Joanne M. Ross
Robin W. Rowan
Terri K. Rowden
Sharla D. Rucker
Rebecca Ruiz
Judith K. Rush
Jason R. Russell
Shelly R. Rutherford
Shawn Salter
Gary Salyer
Tanya Sanders
Fe R. Santucci
Crystal J. Sawyer
Tracy L. Sawyer
Sandra K. Schafer
Ashley R. Schick
Van E. Schmutz
Kristi N. Schumann
Michelle C. Scott
Kevin M. Seitz
Christina A. Self
Rachelle L. Sharpe
Michael Shaw
Justin E. Shelton
Melinda K. Shelton
Rebecca Shelton
Victoria Shepherd
Jamie W. Shults
Donna Shupe
Virginia K. Sigler
Amber J. Smart
Betty J. Smith
Donna M. Smith

Gloria D. Smith
Lloyd R. Smith
Lori E. Smith
Stacie L. Smith
Stephenie Smith
Veronica L. Smith
Denise A. Sorrells
Tina D. Spain
Patricia B. Spears
James E. Speier, Jr.
Megan R. Spencer
Olivia D. Spencer
Daphne L. Stafford
Amy J. Stanley
Pamela N. Stephenson
Brenna J. Stidham
Jacob Stiner
Charlcie R. Stone
Gloria Stone
Lynn Stone
Maggie M. Stone
Tevin A. Storr
Penny L. Strong
Debra M. Stubbs
Nathan P. Stutes
Kelly M. Sullenbarger
Terri D. Sumpter
Dana M. Swann
Monica N. Swanson
Jennifer Szaltzer
Vu Ta
Erika Tadlock
R. Renee Tannery
Daniel Tapia
Judy B. Tatum
Labrina S. Tave
Amia Taylor
Melissa G. Taylor
Ronda D. Taylor
Sabrina L. Taylor
Dr. Tiffany A. Taylor
Terri R. Teeler
Dr. Zehra Tekin
Jace Thomas
Kelsey D. Thomas
Lisa R. Thomas
Patricia Thomas
Amy C. Thompson
Ardell Thompson
Erin E. Thompson
Karrie Thompson
W. Adam Thurmon
Echo B. Tidwell
Bonnie A. Tincher
F. Joe Tincher
Theresa C. Tomlin
Siretha Toston
Katherine S. Townsend
Michael G. Treadway
Gayla E. Trowse
Laurie Turman

Caley Turner
Loretta J. Turner
Laurie Tuttle
Wendi R. Tuz
James R. Tyler
Tina D. Upton
Alixandria G. Valdez
Janet L. Vance
Kelli Vernon
Sharon A. Vickery
Dustin J. Vidrine
Diana Villedas
Jessica L. Waites
Tonya S. Walley
Judith A. Walters
Jayla Ward
Johnnie S. Ware
Stacy L. Warren
Brandy C. Washington
Morgan B. Watson
Shannon P. Webb
Tammy R. Wedeking
Sherry Weeks
Melissa L. Wells
Candice R. Welmaker
Kelly L. White
Kim Whitworth
T'Juaniequa B. Wideman
Patricia A. Wilkes
Jasmine N. Williams
Jennie V. Williams
Leah Williams
Sharon K. Williams
Timkia L. Williams
Trudy L. Williams
Veronica M. Williams
Vickie R. Williams
Ross J. Williamson
Shannon H. Williamson
Christopher D. Willis
Dr. O. Ray Wilson
Anelise M. Wink
Amy M. Winkler
Sharon E. Womack
Teresa L. Wood
Jim E. Woodley
Christen Woods
Josh Woolridge
Jessica Worrell
Karlee Wright
Tirzah Randall
Timothy P. Yarbro
Suzanne L. Yates
Kimberli A. Young
Daniel Zavala
Barbara J. Zimmerman
Cheri L. Zucca

"Farewell to the glorious sunlight,
to the moon and stars, farewell."

from the poem by Thomas E. Spencer



CHRISTUS Trinity Mother Frances Health System complies with applicable Federal civil rights laws and does not discriminate on the basis of race, color, national origin, age, disability, or sex. CHRISTUS Health does not exclude people or treat them differently because of race, color, national origin, age, disability, or sex.

CHRISTUS Trinity Mother Frances Health System:

- Provides free aids and services to people with disabilities to communicate effectively with us, such as:
 - o Qualified sign language interpreters
 - o Written information in other formats (large print, audio, accessible electronic formats, other formats)
 - o Provides free language services to people whose primary language is not English such as:
 - o Qualified interpreters
 - o Information written in other languages

If you need these services, contact a hospital employee. If you believe that CHRISTUS Trinity Mother Frances Health System has failed to provide these services or discriminated in another way on the basis of race, color, national origin,

age, disability, or sex, you can file a grievance with: Susan Willmann, MSN, RN, LSSBB, CHRISTUS Health, Civil Rights Coordinator, 919 Hidden Ridge, Irving, TX 75038, Telephone: 469-282-1298, Fax: 210-766-946.8 CHRISTUS.CivilRights@christushealth.org. You can file a grievance in person or by mail, fax, or email. If you need help filing a grievance, Susan Willmann, MSN, RN, LSSBB is available to help you. You can also file a civil rights complaint with the U.S. Department of Health and Human Services, Office for Civil Rights, electronically through the Office for Civil Rights Complaint Portal, available at <https://ocrportal.hhs.gov/ocr/portal/lobby.jsf>, or by mail or phone at: U.S. Department of Health and Human Services, 200 Independence Avenue, SW, Room 509F, HHH Building, Washington, D.C. 20201, 1-800-368-1019, 800-537-7697 (TDD) Complaint forms are available at <http://www.hhs.gov/ocr/office/file/index.html>.

ATENCIÓN: Si habla español, tiene a su disposición servicios gratuitos de asistencia lingüística. CHÚ Ý: Nếu bạn nói Tiếng Việt, có các dịch vụ hỗ trợ ngôn ngữ miễn phí dành cho bạn. 注意：如果您使用繁體中文，您可以免費獲得

語言援助服務 주의: 한국어를 사용하시는 경우, 언어 지원 서비스를 무료로 이용하실 수 있습니다. ملحوظة: إذا كنت تتحدث أكثر اللغات، فإن خدمات المساعدة اللغوية تتوفر لك بالمجان. اتصل برقم خيبردار: اگر آپ اردو بولتے ہیں، تو آپ کو PAUNAWA: Kung nagsasalita ka ng Tagalog, maaari kang gumamit ng mga serbisyo ng tulong sa wika nang walang bayad. ATTENTION: Si vous parlez français, des services d'aide linguistique vous sont proposés gratuitement.

توجه: اگر بھ زبان فارسی گفتگو می کنید، تسهیلات زبانی بصورت رایگان برای شما ACHTUNG: Wenn Sie Deutsch sprechen, stehen Ihnen kostenlos sprachliche Hilfsdienstleistungen zur Verfügung. ATENÇÃO: Se fala português, encontram-se disponíveis serviços linguísticos, grátis. ВНИМАНИЕ: Если вы говорите на русском языке, то вам доступны бесплатные услуги перевода. 注意事項: 日本語を話される場合、無料の言語支援をご利用いただけます. ใต้ລາຍ: ຖ້າວ່າ ທ່ານເວົ້າພາສາລາວ, ການບໍລິການຊ່ວຍເຫຼືອດ້ານພາສາ, ໄດ້ຮັບຮ່າງຮາດ. 注意: 如果您使用繁體中文，您可以免費獲得